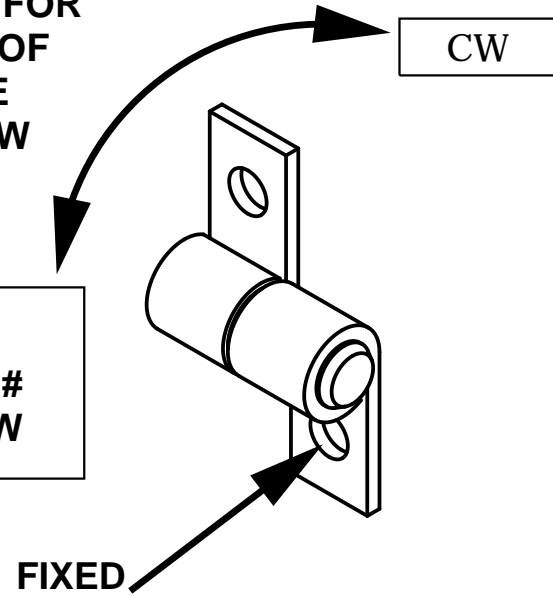


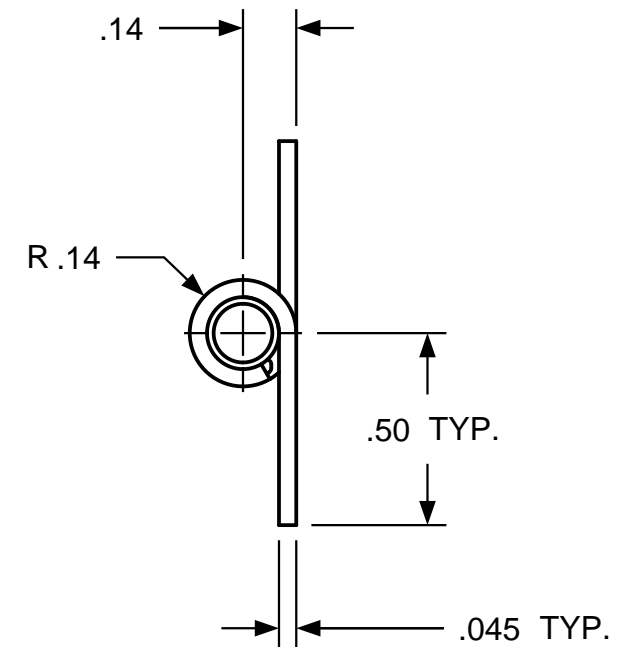
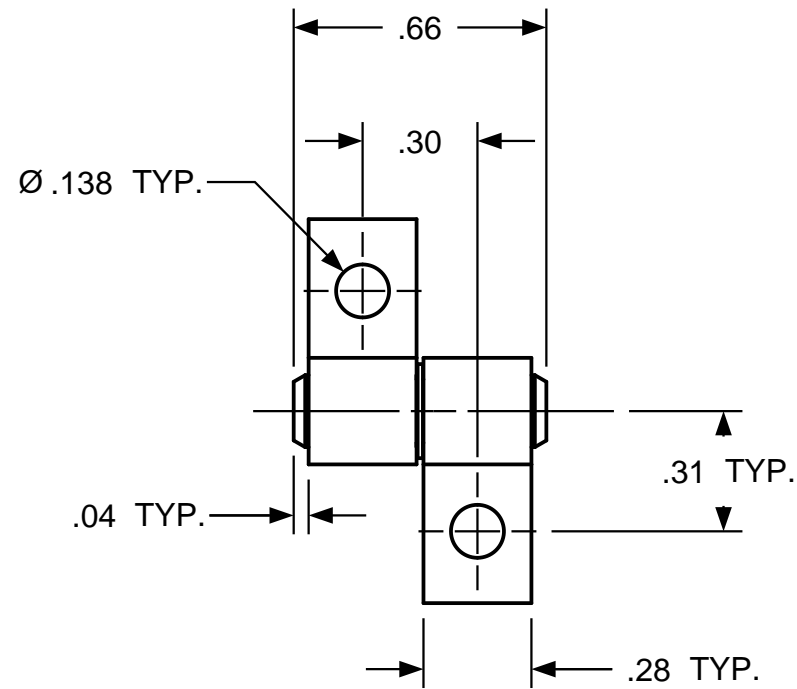
ROTATION
AS SHOWN FOR
CALLOUT OF
TORQUE
CW < CCW



CCW
DASH #
BELOW



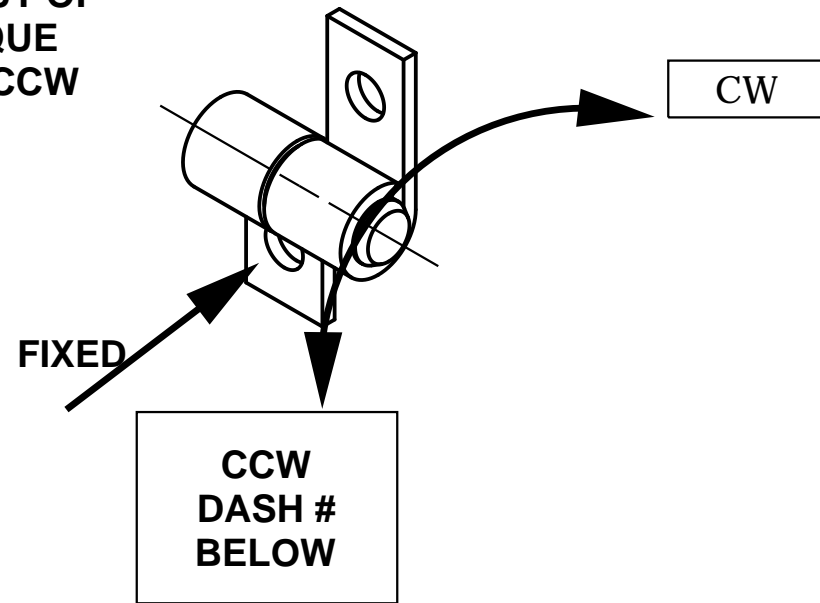
REVISION RECORD				
SYM	DESCRIPTION	BY	DATE	APPD
A	RELEASED FOR MFG.	RA	6/1/18	RA

TORQUE - CCW	
- 1 -	CCW .5 - 1.5 lb. in
- 2 -	CCW 1.0 - 2.5 lb. in
- 3 -	CCW 2.5 - 4.5 lb. in
- 4 -	CCW 4.5 - 6.0 lb. in
CUSTOM TORQUE CONFIGURATIONS AVAILABLE.	

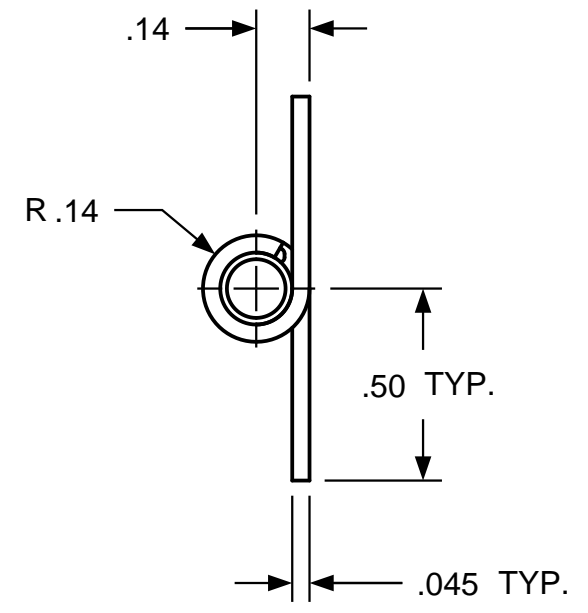
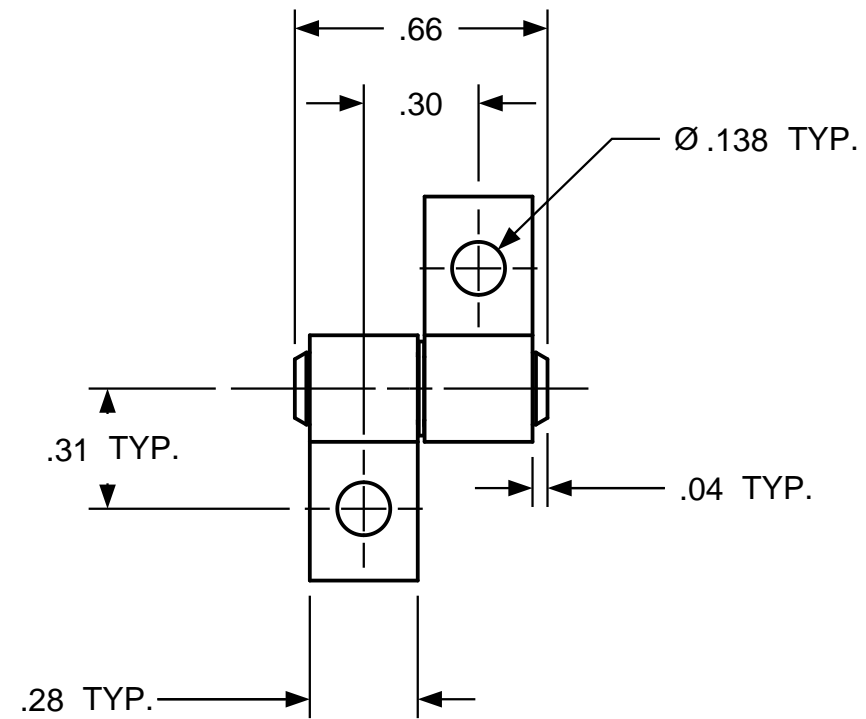


USED ON	SOLID	REV	TOLERANCES		ENGLISH / METRIC		Torq MASTER INTERNATIONAL		200 HARVARD AVE STAMFORD, CT USA	
STANDARD	115	A	ENGLISH	METRIC						
NEXT ASSY	N/A		.XX ±.015 IN	.X ±.4 MM	DRAWN BY	DATE	MATERIAL N/A			
QUANTITY			.XXX ±.005 IN	.XX ±.13 MM	RA	6/1/18	TITLE HINGE, INTERFACE			
PER ASSY, PCS			.XXXX ±.0002 IN	.XXX ±.05 MM	CHECKED BY	DATE	SIZE B		REV A	
TOTAL, PCS					RA	6/1/18	SB 188 SB 115			
THIS INFORMATION IS PROPRIETARY TOTORQMASTER, INTL. THE POSSESSOR AGREES TO MAINTAIN IT IN CONFIDENCE, NOT REPRODUCING OR REVEALING IT IN WHOLE OR IN PART.					 		SCALE	NTS	SHEET	1 OF 1

ROTATION
AS SHOWN FOR
CALLOUT OF
TORQUE
CW < CCW



REVISION RECORD				
SYM	DESCRIPTION	BY	DATE	APPD
A	RELEASED FOR MFG.	RA	6/1/18	RA



TORQUE - CCW	
- 1 -	CCW .5 - 1.5 lb. in
- 2 -	CCW 1.0 - 2.5 lb. in
- 3 -	CCW 2.5 - 4.5 lb. in
- 4 -	CCW 4.5 - 6.0 lb. in
CUSTOM TORQUE CONFIGURATIONS AVAILABLE.	

USED ON	SOLID	REV	TOLERANCES		ENGLISH / METRIC		Torq Master INTERNATIONAL		200 HARVARD AVE STAMFORD, CT USA	
STANDARD	116	A	ENGLISH	METRIC						
NEXT ASSY	N/A		.XX ±.015 IN	.X ±.4 MM	DRAWN BY	DATE	MATERIAL N/A			
QUANTITY			.XXX ±.005 IN	.XX ±.13 MM	RA	6/1/18	TITLE HINGE, INTERFACE			
PER ASSY, PCS			.XXXX ±.0002 IN	.XXX ±.05 MM	CHECKED BY	DATE	SIZE		REV	
TOTAL, PCS						RA	6/1/18	B		A
THIS INFORMATION IS PROPRIETARY TOTORQMASTER, INTL. THE POSSESSOR AGREES TO MAINTAIN IT IN CONFIDENCE, NOT REPRODUCING OR REVEALING IT IN WHOLE OR IN PART.							SCALE NTS		SHEET 1 OF 1	