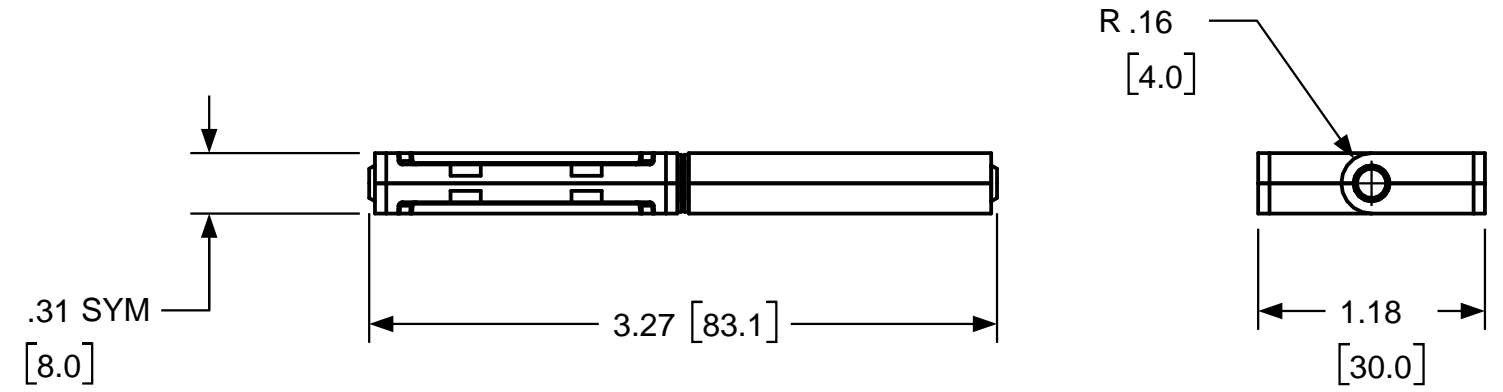
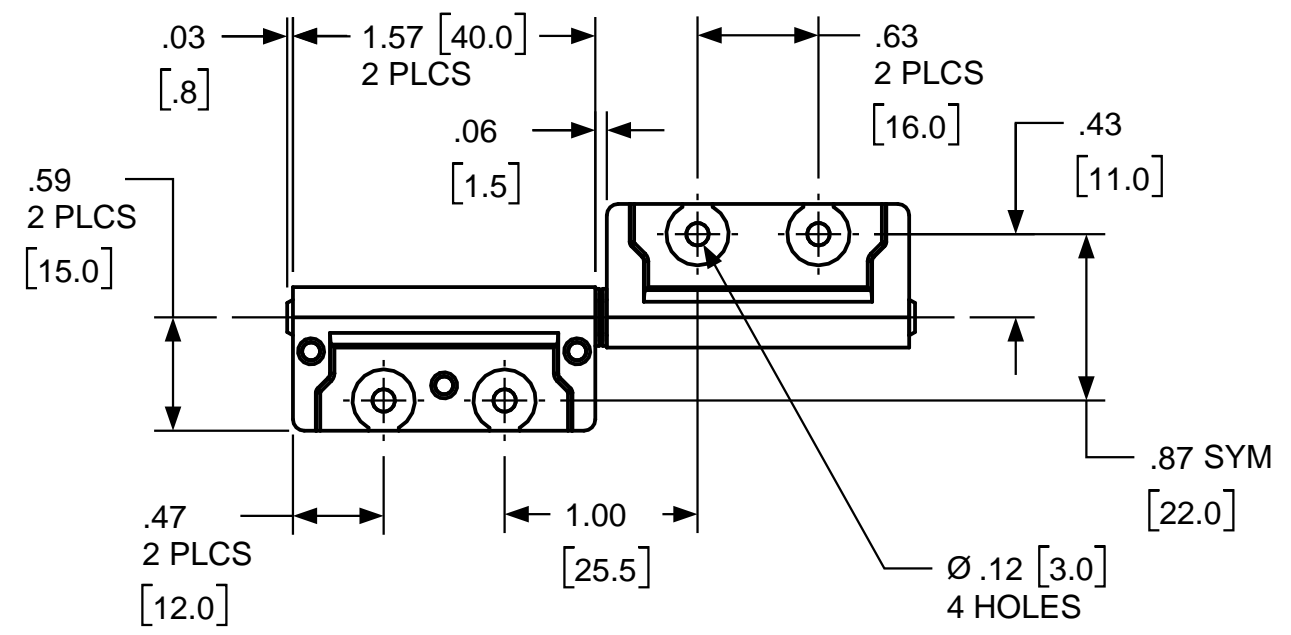
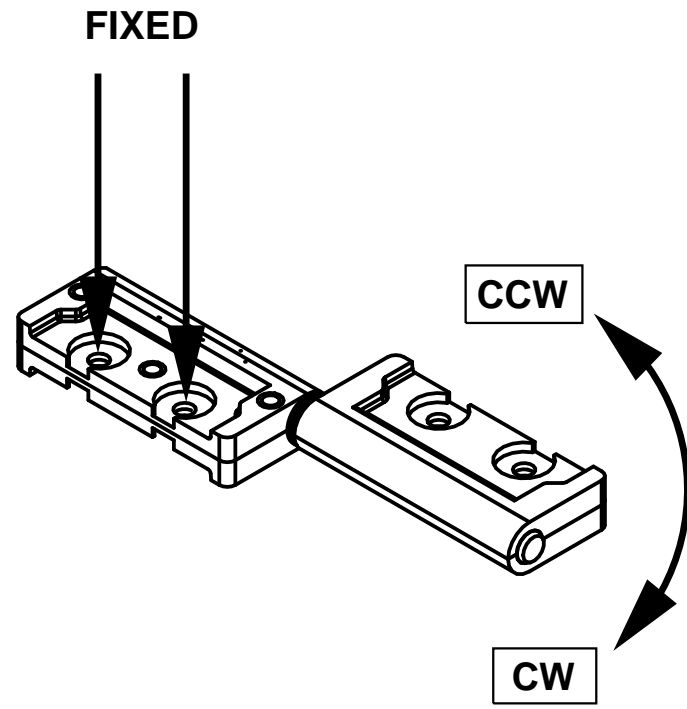


| REVISION RECORD |                        |     |          |      |
|-----------------|------------------------|-----|----------|------|
| SYM             | DESCRIPTION            | BY  | DATE     | APPD |
| B               | REVISED PER ECN 03094. | RMF | 12/12/03 | LH   |
| C               | REVISED PER ECN 06034. | RMF | 3/30/06  | WB   |



CUSTOM TORQUE CONFIGURATIONS AVAILABLE.  
FOR QUOTE:  
www.torqmaster.com  
1 - 888 - 41 - HINGE

| TORQUE        |           |            |
|---------------|-----------|------------|
| GEOMETRY      | CW TORQUE | CCW TORQUE |
| ZC 188 ZC 101 | 4.5       | 4.5        |
| ZC 188 ZC 101 |           |            |
| ZC 188 ZC 101 |           |            |
| ZC 188 ZC 101 |           |            |
| ZC 188 ZC 101 |           |            |

| USED ON  | SOLID | REV | TOLERANCES                                       |  | ENGLISH / METRIC |         | TorqMaster INTERNATIONAL |               | 200 HARVARD AVE<br>STAMFORD, CT USA |        |
|--|-------|-----|--|--|------------------|---------|--------------------------|---------------|-------------------------------------|--------|
| STANDARD   | 101   | B   | ENGLISH  | METRIC                                   |                  |         |                          |               |                                     |        |
| NEXT ASSY  | N/A   |     | .XX ±.015 IN<br>.XXX ±.005 IN<br>.XXXX ±.0020 IN | .X ±.3 MM<br>.XX ±.13 MM<br>.XXX ±.05 MM | DRAWN BY         | DATE    | MATERIAL                 |               | N/A                                 |        |
| QUANTITY   |       |     | ANGLES ±0.5°<br>SURFACE 63 μ                     |  | RA               | 4/14/97 | TITLE                    |               | HINGE INTERFACE                     |        |
| PER ASSY, PCS  | -     |     |  |  | CHECKED BY       | DATE    | SIZE                     | ZC 188 ZC 101 |                                     | REV    |
| TOTAL, PCS   | -     |     |  |  | DJC              | 4/14/97 | B                        |               |                                     | C      |
| THIS INFORMATION IS PROPRIETARY TO TORQMASTER, INTL.<br>THE POSSESSOR AGREES TO MAINTAIN IT IN CONFIDENCE,<br>NOT REPRODUCING OR REVEALING IT IN WHOLE OR IN PART. |       |     |  |  |                  |         | SCALE                    | 1:1           | SHEET                               | 1 OF 1 |