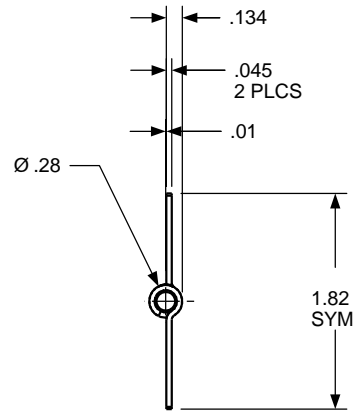
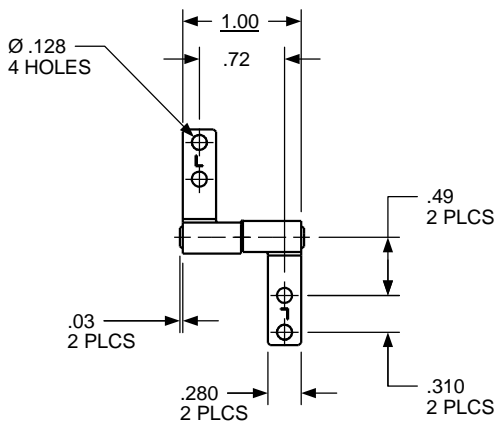
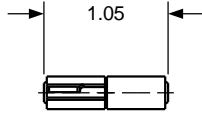
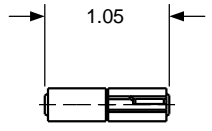
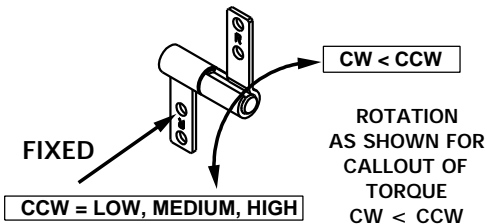


| TORQUE |
|-----------------------------------|
| LOW CCW 2.5 - 4.5 lb. in |
| MEDIUM CCW 4.5 - 6.0 lb. in |
| HIGH CCW 6.0 - 7.5 lb. in |

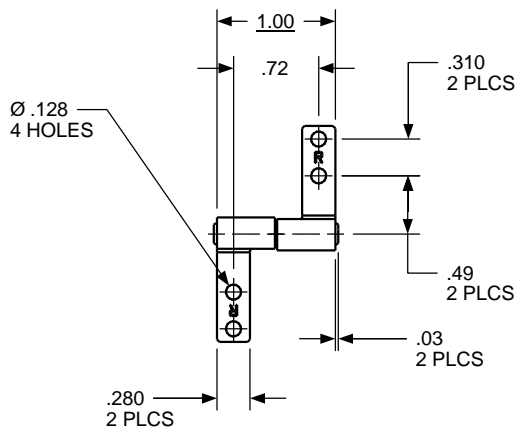


| REVISION RECORD | | | | |
|-----------------|------------------------------------|-----|--------|------|
| SYM | DESCRIPTION | BY | DATE | APPD |
| B | REDRAWN ON NEW FORMAT, NO CHANGES. | RMF | 8/2/00 | DJC |

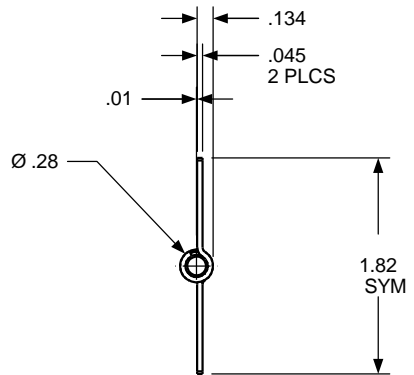
| | | | | | | | | | |
|--|-------|-----|-----------------|------------|--------|-----------------|---------------|--------------------------------------|--------|
| USED ON | SOLID | REV | TOLERANCES | DRAWN BY | DATE | ENGLISH | | TorqMaster, Inc. Stamford, CT USA | |
| STANDARD | 121 | 0.0 | ENGLISH | RMF | 8/2/00 | MATERIAL | | N/A | |
| NEXT ASSY | NONE | | .XX ±.015 in | CHECKED BY | DATE | TITLE | | | |
| QUANTITY | | | .XXX ±.005 in | YK | 8/2/00 | HINGE INTERFACE | | | |
| PER ASSY, pcs | - | | .XXXX ±.0002 in | | | SIZE | SB 188 SB 121 | | REV |
| TOTAL, pcs | - | | | | | B | | | B |
| THIS INFORMATION IS PROPRIETARY TOTORQMASTER, INC. THE POSSESSOR AGREES TO MAINTAIN IT IN CONFIDENCE, NOT REPRODUCING OR REVEALING IT IN WHOLE OR IN PART. | | | | | SCALE | | 1:1 | SHEET | 1 OF 1 |



| TORQUE |
|-----------------------------------|
| LOW CCW 2.5 - 4.5 lb. in |
| MEDIUM CCW 4.5 - 6.0 lb. in |
| HIGH CCW 6.0 - 7.5 lb. in |



| REVISION RECORD | | | | |
|-----------------|------------------------------------|-----|--------|------|
| SYM | DESCRIPTION | BY | DATE | APPD |
| B | REDRAWN ON NEW FORMAT, NO CHANGES. | RMF | 8/2/00 | DJC |



| | | | | | | | | | |
|--|-------|-----|---|------------|--------|-----------------|---------------|--------------------------------------|--------|
| USED ON | SOLID | REV | TOLERANCES | DRAWN BY | DATE | ENGLISH | | TorqMaster, Inc. Stamford, CT USA | |
| STANDARD | 122 | 0.0 | ENGLISH .XX ±.015 in .XXX ±.005 in .XXXX ±.0002 in | RMF | 8/2/00 | MATERIAL | | N/A | |
| NEXT ASSY | NONE | | | CHECKED BY | DATE | TITLE | | | |
| QUANTITY | | | | YK | 8/2/00 | HINGE INTERFACE | | | |
| PER ASSY, pcs | - | | | | | SIZE | SB 188 SB 122 | | REV |
| TOTAL, pcs | - | | | | | B | | | B |
| THIS INFORMATION IS PROPRIETARY TOTORQMASTER, INC. THE POSSESSOR AGREES TO MAINTAIN IT IN CONFIDENCE, NOT REPRODUCING OR REVEALING IT IN WHOLE OR IN PART. | | | | | SCALE | | 1:1 | SHEET | 1 OF 1 |