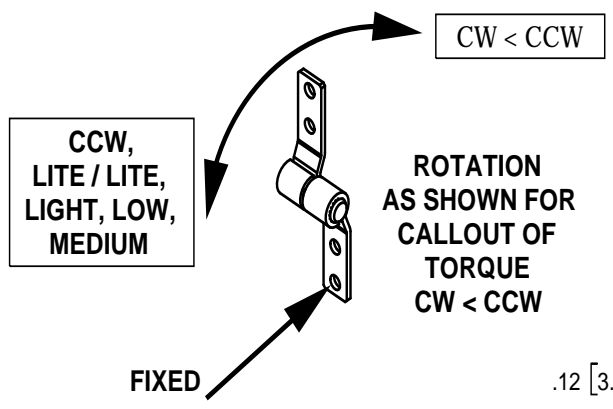
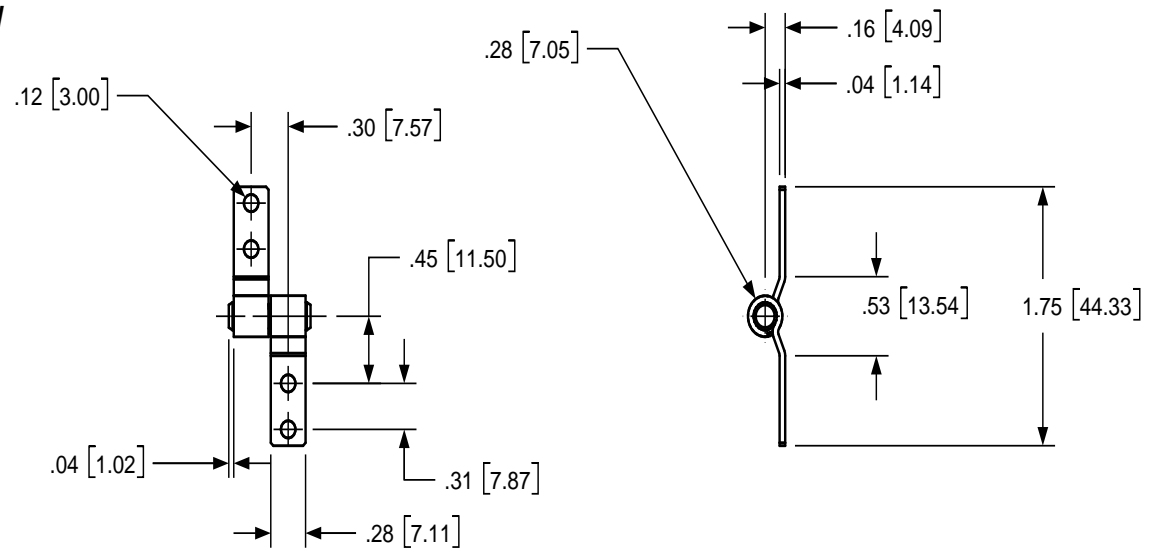
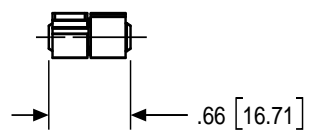


REVISION RECORD				
SYM	DESCRIPTION	BY	DATE	APPD
C	REVISED PER ECN 02036.	RMF	6/6/02	DJC
D	REVISED PER ECN 03026.	RMF	4/3/03	DJC
E	REVISED PER ECN 08016	WB	10JUL08	ER



ROTATION AS SHOWN FOR CALLOUT OF TORQUE  
CW < CCW



TORQUE
<b>LITE / LITE</b> CCW .5 - 1.5 lb. in.
<b>LIGHT</b> CCW 1.0 - 2.5 lb. in
<b>LOW</b> CCW 2.5 - 4.5 lb. in
<b>MEDIUM</b> CCW 4.5 - 6.0 lb. in

UNITS: INCHES[MILLIMETERS]

USED ON	SOLID	REV	TOLERANCES	DRAWN BY	DATE	TorqMaster, Inc. Stamford, CT USA	
STANDARD	109	B	ENGLISH	RMF	12/11/00	ENGLISH	
NEXT ASSY	N/A		.XX ±.015 IN .XXX ±.005 IN	CHECKED BY	DATE	MATERIAL	N/A
QUANTITY				DJC	2/9/01	TITLE HINGE INTERFACE	
PER ASSY, PCS	-					SIZE	
TOTAL, PCS	-					<b>B</b>	<b>SB 188 SB 109</b>
THIS INFORMATION IS PROPRIETARY TO TORQMASTER, INTL. THE POSSESSOR AGREES TO MAINTAIN IT IN CONFIDENCE, NOT REPRODUCING OR REVEALING IT IN WHOLE OR IN PART.						SCALE	1:1
						SHEET	1 OF 1
						REV	<b>E</b>