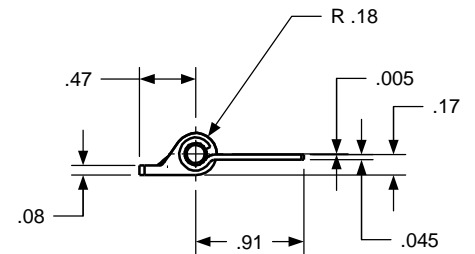
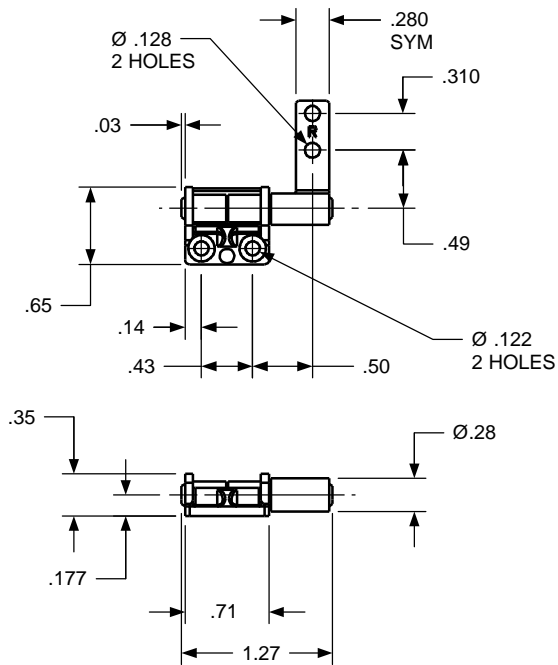


REVISION RECORD				
SYM	DESCRIPTION	BY	DATE	APPD
C	REDRAWN ON NEW FORMAT, NO CHANGES.	RMF	4/20/01	DJC
D	REVISED PER ECN 03077.	RMF	10/31/03	LH



TORQUE

GEOMETRY	CW TORQUE	CCW TORQUE	HAND
ZE-188-SB-101	-1	-1	-L
ZE-188-SB-101	-1	-1	-R
ZE-188-SB-101	-4	-4	-L
ZE-188-SB-101	-4	-4	-R

CUSTOM TORQUE CONFIGURATIONS AVAILABLE. FOR QUOTE:
www.torqmaster.com
 1-888-41 HINGE

USED ON	SOLID	REV	TOLERANCES	DRAWN BY	DATE	ENGLISH		TorqMaster, Inc. Stamford, CT USA	
STANDARD	101	D	ENGLISH	RMF	4/19/01	MATERIAL		N/A	
NEXT ASSY	NONE		.XX ±.015 IN .XXX ±.005 IN	CHECKED BY	DATE	TITLE			
QUANTITY				DJC	4/19/01	HINGE INTERFACE			
PER ASSY, PCS	-		ANGLES ±0.5p			SIZE		ZE 188 SB 101	
TOTAL, PCS	-		SURFACE 63 μ			B		REV D	
THIS INFORMATION IS PROPRIETARY TO TORQMASTER, INTL. THE POSSESSOR AGREES TO MAINTAIN IT IN CONFIDENCE, NOT REPRODUCING OR REVEALING IT IN WHOLE OR IN PART.						SCALE 1:1		SHEET 1 OF 1	