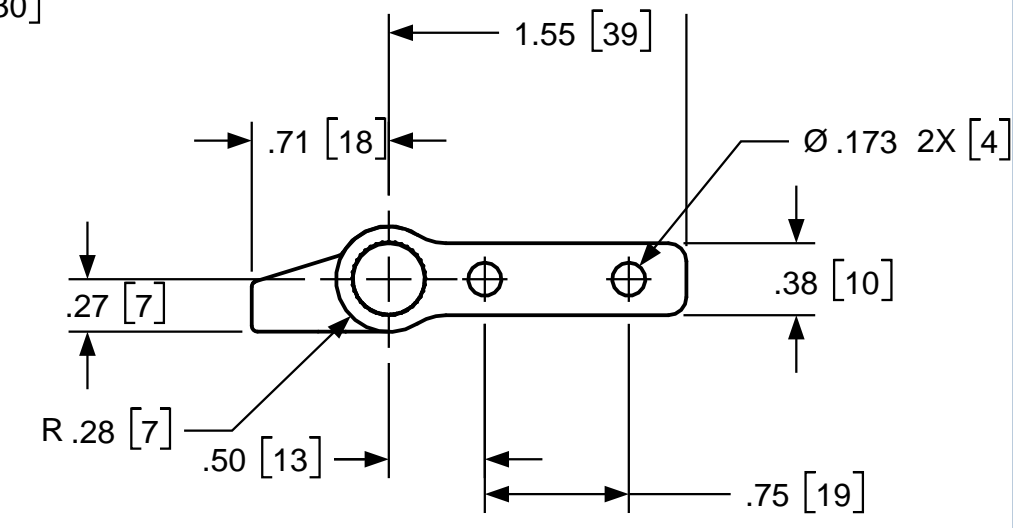
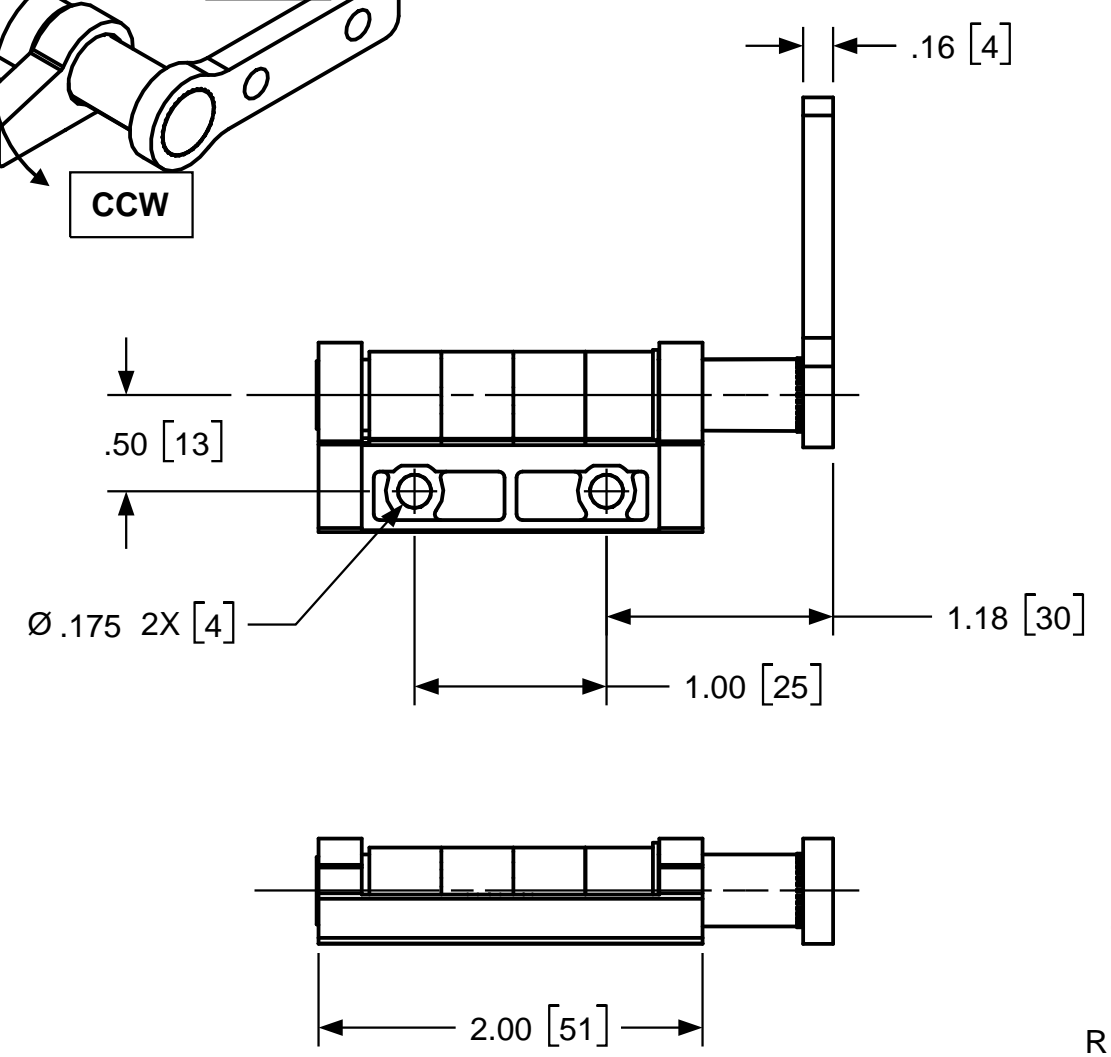
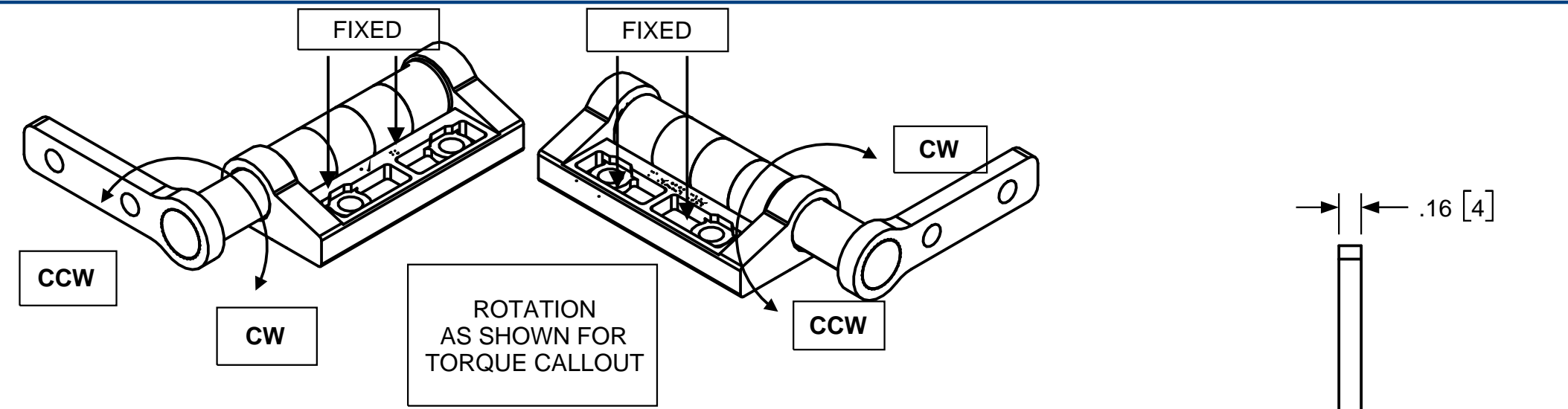


| REVISION RECORD | | | | |
|-----------------|-------------------|----|---------|------|
| SYM | DESCRIPTION | BY | DATE | APPD |
| A | RELEASED FOR MFG. | RA | 4/19/10 | |



| TORQUE | | | |
|---------------|-----------|------------|------|
| GEOMETRY | CW TORQUE | CCW TORQUE | HAND |
| ZE-375-SA-103 | 20 | 20 | L |
| ZE-375-SA-103 | 20 | 20 | R |
| ZE-375-SA-103 | 30 | 30 | L |
| ZE-375-SA-103 | 30 | 30 | R |
| ZE-375-SA-103 | X | 40 | L |
| ZE-375-SA-103 | 40 | X | R |
| ZE-375-SA-103 | 40 | X | L |
| ZE-375-SA-103 | X | 40 | R |

CUSTOM TORQUE CONFIGURATIONS AVAILABLE. FOR QUOTE: www.torqmaster.com 1-888-41-HINGE

| USED ON | SOLID | REV | TOLERANCES | | ENGLISH / METRIC | | 200 HARVARD AVE STAMFORD, CT USA | |
|--|-------|-----|--|--|------------------|---------|---|-----|
| CUSTOM | | 0.0 | ENGLISH | METRIC | | | HINGE INTERFACE | |
| NEXT ASSY | N/A | | .XX ±.015 IN .XXX ±.005 IN .XXXX ±.0002 IN | .X ±.3 MM .XX ±.13 MM .XXX ±.05 MM | DRAWN BY | DATE | MATERIAL | |
| QUANTITY | | | ANGLES ±0.5° SURFACE 63 | | RA | 8-10-09 | N/A | |
| PER ASSY, PCS | - | | | | CHECKED BY | DATE | TITLE | |
| TOTAL, PCS | - | | | | | | ZE 375 SA 103 | |
| THIS INFORMATION IS PROPRIETARY TO TORQMASTER, INTL. THE POSSESSOR AGREES TO MAINTAIN IT IN CONFIDENCE, NOT REPRODUCING OR REVEALING IT IN WHOLE OR IN PART. | | | | | | | SCALE | REV |
| | | | | | | | NTS | A |
| | | | | | | | SHEET 1 OF 1 | |