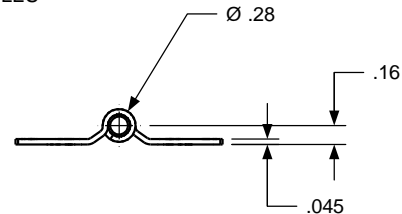
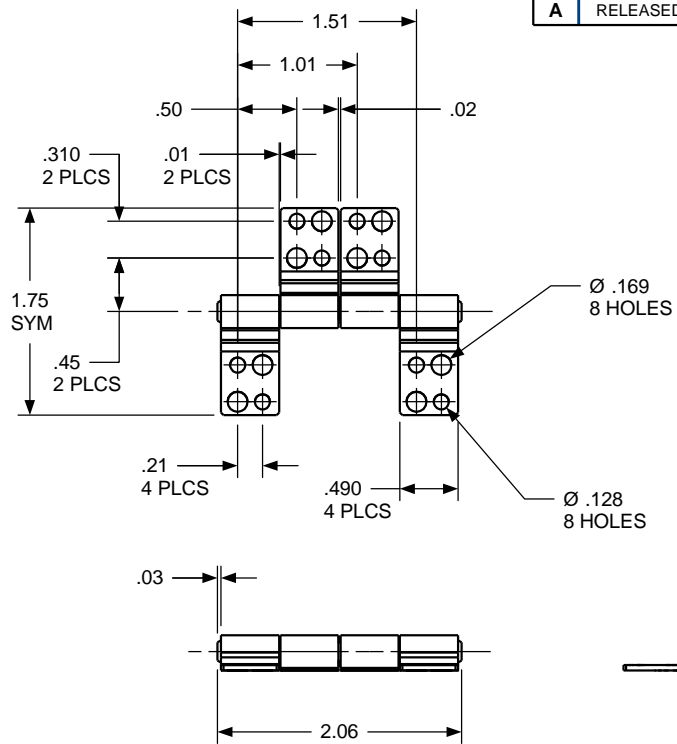


ROTATION
AS SHOWN FOR
CALLOUT OF
TORQUE
CCW < CW



REVISION RECORD

SYM	DESCRIPTION	BY	DATE	APPD
A	RELEASED PER ERN 04005.	RMF	2/4/04	DJC

TORQUE

LOW

CW
5.0 - 8.5 lb. in

MEDIUM

CW
8.5 - 12.0 lb. in

HIGH

CW
12.0 - 15.0 lb. in

USED ON	SOLID	REV	TOLERANCES		ENGLISH / METRIC		TOROMASTER INTERNATIONAL		200 HARVARD AVE STAMFORD, CT USA	
STANDARD	252	0.0	ENGLISH	METRIC						
NEXT ASSY	N/A		.XX ±.015 IN .XXX ±.005 IN .XXX ±.0020 IN	.X ±.3 MM .XX ±.13 MM .XXX ±.05 MM	DRAWN BY	DATE	MATERIAL N/A			
QUANTITY			ANGLES ±0.5° SURFACE 63 μ		RMF	11/12/03	TITLE HINGE INTERFACE			
PER ASSY, PCS	-				CHECKED BY	DATE	SIZE B		REV A	
TOTAL, PCS	-				DJC	11/12/03	SB 188 SB 252			
THIS INFORMATION IS PROPRIETARY TO TOROMASTER, INTL. THE POSSESSOR AGREES TO MAINTAIN IT IN CONFIDENCE, NOT REPRODUCING OR REVEALING IT IN WHOLE OR IN PART.					SCALE 1:1		SHEET 1 OF 1			