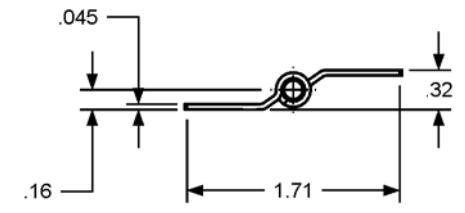
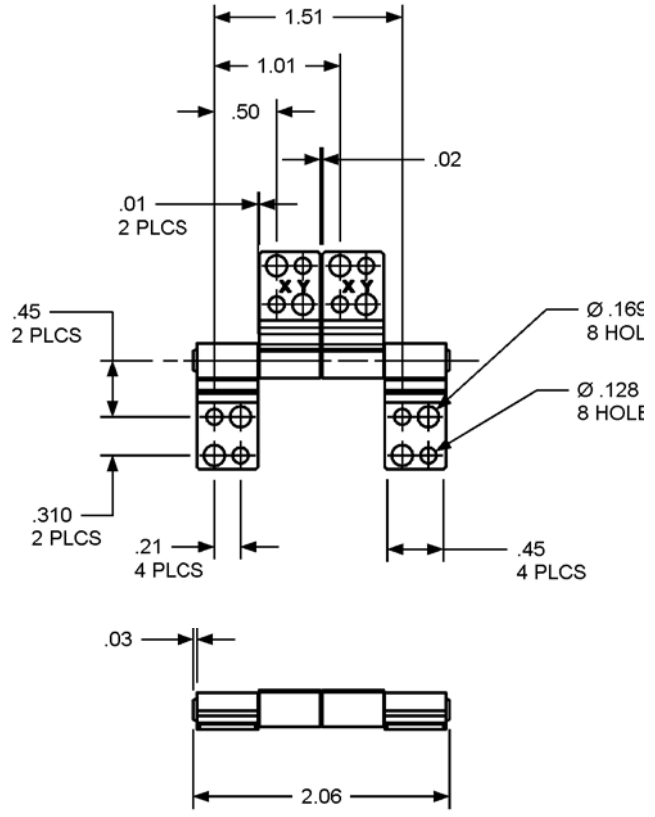


ROTATION
AS SHOWN FOR
CALLOUT OF
TORQUE
CW = CCW



REVISION RECORD				
SYM	DESCRIPTION	BY	DATE	APPD
A	RELEASED PER ERN 045042.	RMF	12/15/05	WB
B	REVISED PER ECN 06089.	RMF	10/9/06	WB

TORQUE
<u>LOW</u> 5.0 - 8.2 lb. in.
<u>MEDIUM</u> 8.5 - 12.0 lb. in.
<u>HIGH</u> 12.0 - 15.0 lb. in.

USED ON	SOLID	REV	TOLERANCES		ENGLISH / METRIC		TORQMASTER INTERNATIONAL		200 HARVARD AVE STAMFORD, CT. USA		
CUSTOM	254	0.0	ENGLISH	METRIC							
NEXT ASSY	N/A		.XX ± 0.015 IN .XXX ± 0.005 IN .XXXX ± 0.0002 IN	.X ± 0.3 MM .XX ± 0.13 MM .XXX ± 0.05 MM	DRAWN BY	DATE	MATERIAL	N/A			
QUANTITY					RMF	12/15/05	TITLE				
PER ASSY, PCS			ANGLES ± 0.5° SURFACE 63 μ		CHECKED BY	DATE	HINGE INTERFACE				
TOTAL, PCS					WB	12/15/05	SIZE	SB 188 SB 254		REV	
THIS INFORMATION IS PROPRIETARY TO TORQMASTER, INTL. THE POSSESSOR AGREES TO MAINTAIN IT IN CONFIDENCE, NOT REPRODUCING OR REVEALING IT IN WHOLE OR IN PART.							B			B	
							SCALE	1:1		SHEET 1 OF 1	