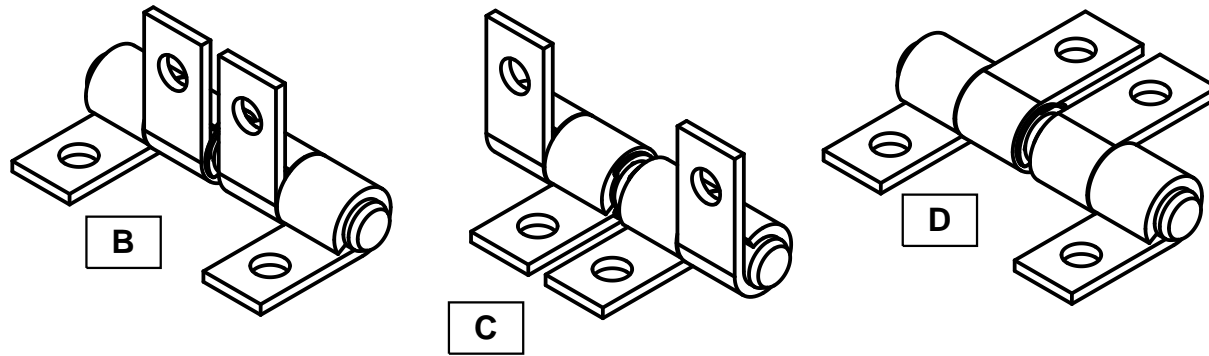


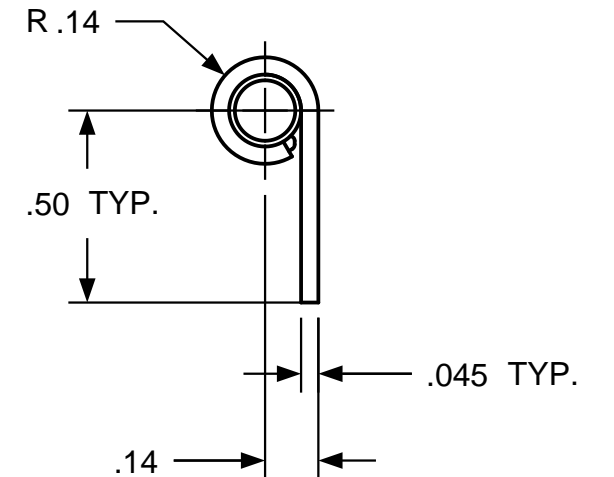
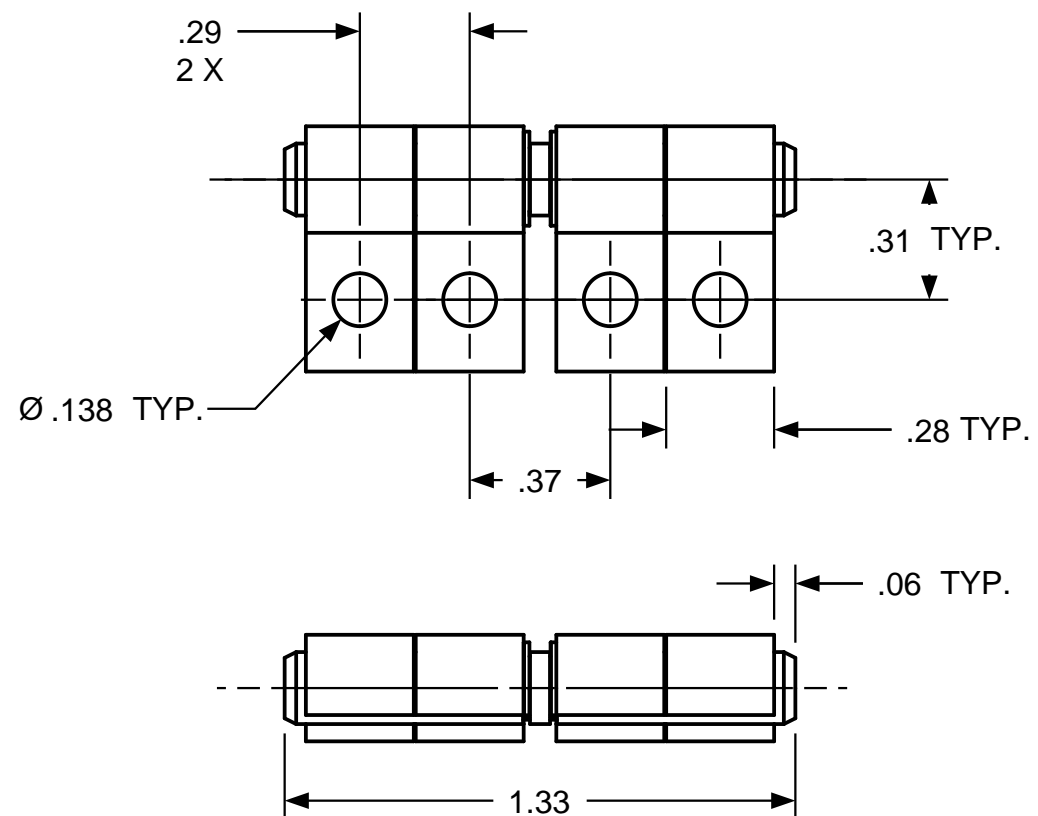
ALTERNATE CONFIGURATIONS AVAILABLE (A = AS DRWN.) B, C & D



ROTATION AS SHOWN FOR TORQUE
CALLOUT
CW = CCW

- TORQUE -	
-1-	1.0 - 2.5 IN LB
-2-	2.5 - 4.0 IN LB
-3-	4.0 - 5.5 IN LB
-4-	5.5 - 7.0 IN LB
-5-	7.0 - 8.5 IN LB
-6-	8.5 - 10.0 IN LB

CUSTOM TORQUE CONFIGURATIONS AVAILABLE.



REVISION RECORD				
SYM	DESCRIPTION	BY	DATE	APPD
A	RELEASED FOR MFG.	RA	6/4/18	RA

USED ON	SOLID	REV	TOLERANCES		ENGLISH / METRIC		Torq Master International		200 HARVARD AVE STAMFORD, CT USA	
STANDARD	261	A	ENGLISH	METRIC						
NEXT ASSY	N/A		.XX ±.015 IN	.X ±.4 MM	DRAWN BY	DATE	MATERIAL N/A			
QUANTITY			.XXX ±.005 IN	.XX ±.13 MM	RA	6/4/18	TITLE HINGE INTERFACE DRW			
PER ASSY, PCS			.XXXX ±.0002 IN	.XXX ±.05 MM	CHECKED BY	DATE	SIZE B		REV A	
TOTAL, PCS					RA	6/4/18	SB 188 SB 261			
THIS INFORMATION IS PROPRIETARY TOTORQMASTER, INTL. THE POSSESSOR AGREES TO MAINTAIN IT IN CONFIDENCE, NOT REPRODUCING OR REVEALING IT IN WHOLE OR IN PART.							SCALE NTS		SHEET 1 OF 1	