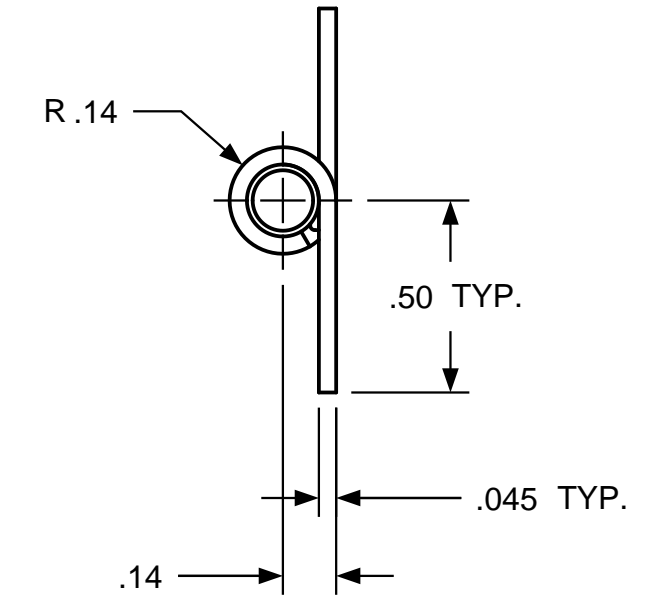
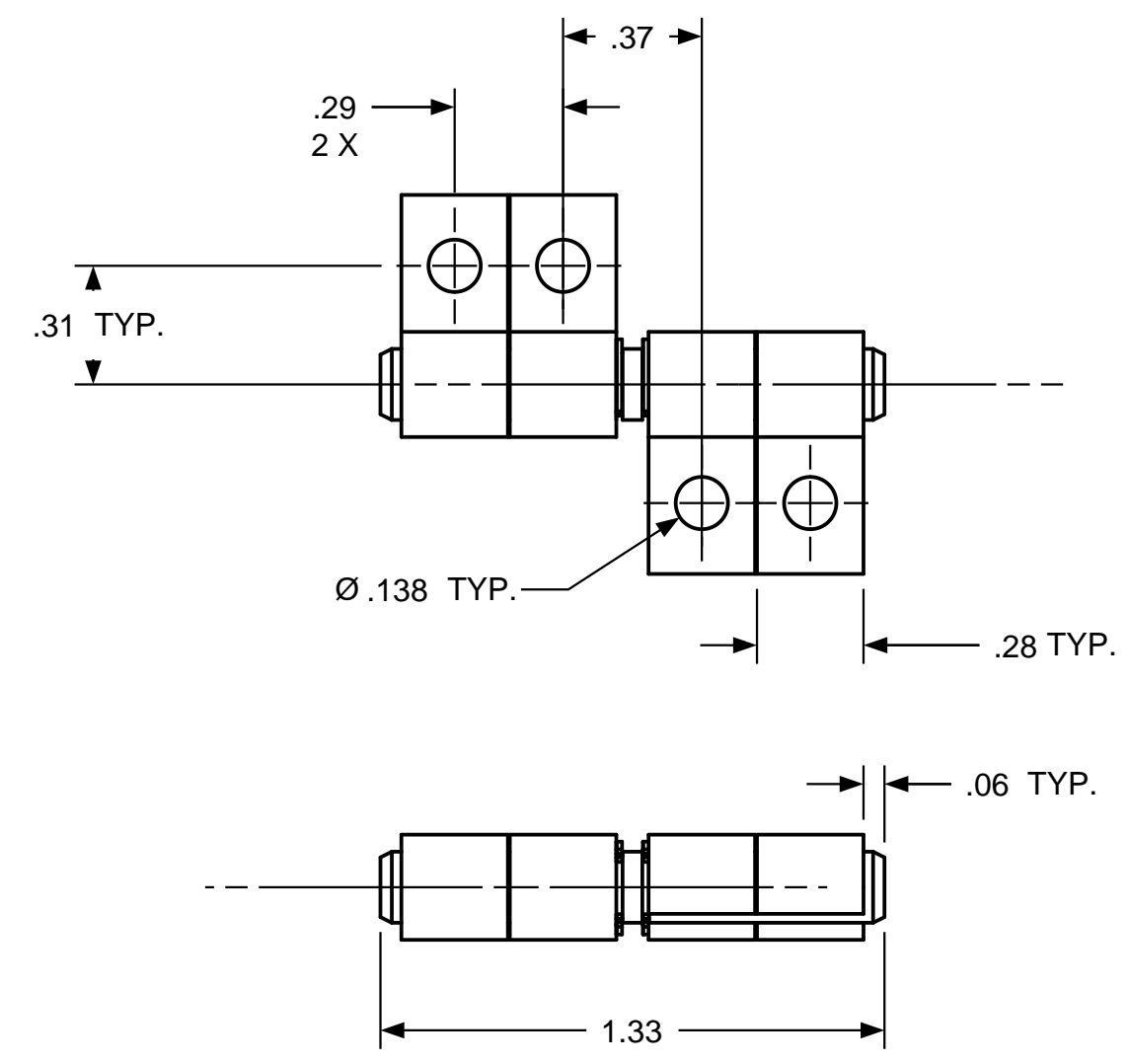
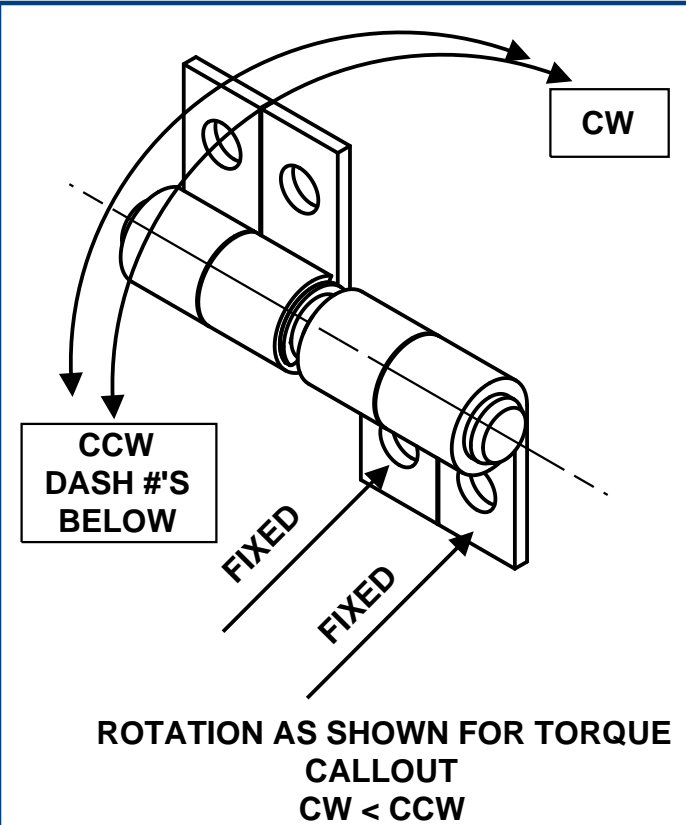




REVISION RECORD				
SYM	DESCRIPTION	BY	DATE	APPD
A	RELEASED FOR MFG.	RA	8/24/18	RA

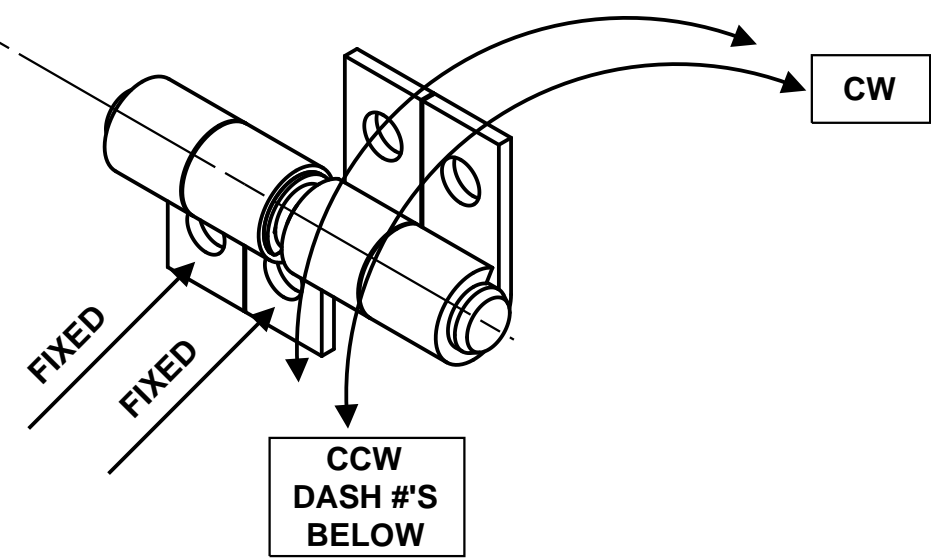


TORQUE - CCW	
-1-	1.5 - 3.0 IN LB
-2-	3.0 - 4.5 IN LB
-3-	4.5 - 6.0 IN LB
-4-	6.0 - 7.5 IN LB
-5-	7.5 - 9.0 IN LB
-6-	9.0 - 10.5 IN LB
-7-	10.5 - 12.0 IN LB

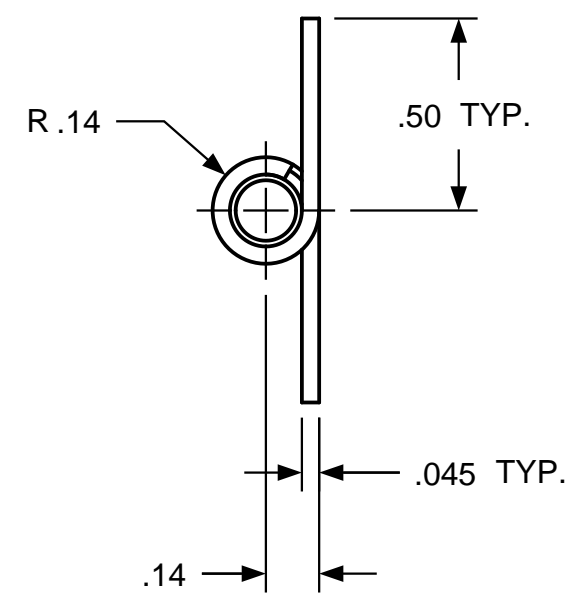
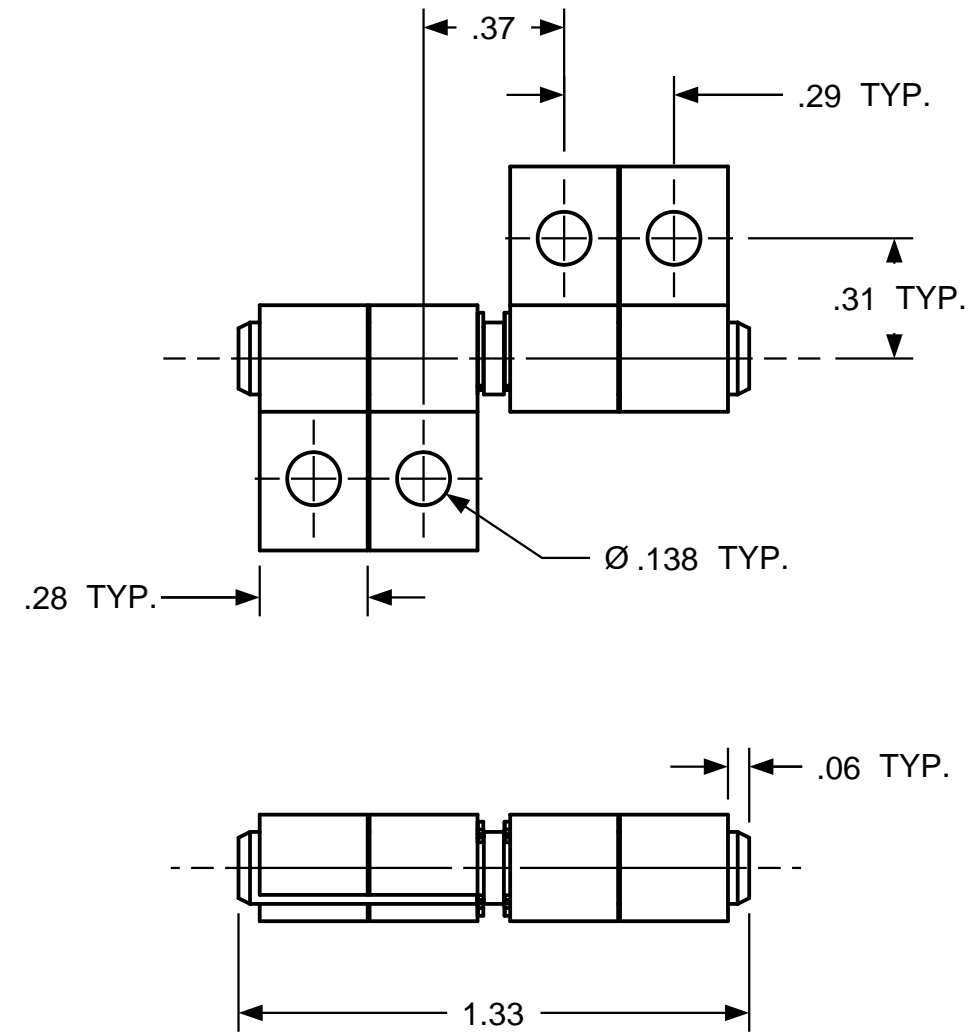
CUSTOM TORQUE CONFIGURATIONS AVAILABLE.

USED ON	SOLID	REV	TOLERANCES		ENGLISH / METRIC		Torq MASTER INTERNATIONAL		200 HARVARD AVE STAMFORD, CT USA		
STANDARD	263	A	ENGLISH	METRIC							
NEXT ASSY	N/A		.XX ±.015 IN	.X ±.4 MM	DRAWN BY	DATE	MATERIAL N/A				
QUANTITY			.XXX ±.005 IN	.XX ±.13 MM	RA	8/24/18	TITLE HINGE INTERFACE DRW				
PER ASSY, PCS			.XXXX ±.0002 IN	.XXX ±.05 MM	CHECKED BY	DATE	SIZE B		REV A		
TOTAL, PCS					RA	8/24/18	SCALE NTS		SHEET 1 OF 1		
THIS INFORMATION IS PROPRIETARY TOTORQMASTER, INTL. THE POSSESSOR AGREES TO MAINTAIN IT IN CONFIDENCE, NOT REPRODUCING OR REVEALING IT IN WHOLE OR IN PART.					 						

REVISION RECORD				
SYM	DESCRIPTION	BY	DATE	APPD
A	RELEASED FOR MFG.	RA	8/24/18	RA



ROTATION AS SHOWN FOR TORQUE CALLOUT
CW < CCW



TORQUE - CCW	
-1-	1.5 - 3.0 IN LB
-2-	3.0 - 4.5 IN LB
-3-	4.5 - 6.0 IN LB
-4-	6.0 - 7.5 IN LB
-5-	7.5 - 9.0 IN LB
-6-	9.0 - 10.5 IN LB
-7-	10.5 - 12.0 IN LB

CUSTOM TORQUE CONFIGURATIONS AVAILABLE.

USED ON	SOLID	REV	TOLERANCES		ENGLISH / METRIC		Torq MASTER INTERNATIONAL		200 HARVARD AVE STAMFORD, CT USA	
STANDARD	264	A	ENGLISH	METRIC						
NEXT ASSY	N/A		.XX ±.015 IN	.X ±.4 MM	DRAWN BY	DATE	MATERIAL N/A			
QUANTITY			.XXX ±.005 IN	.XX ±.13 MM	RA	8/24/18	TITLE HINGE INTERFACE DRW			
PER ASSY, PCS			.XXXX ±.0002 IN	.XXX ±.05 MM	CHECKED BY	DATE	SIZE B		REV A	
TOTAL, PCS						RA	8/24/18	SB 188 SB 264		
THIS INFORMATION IS PROPRIETARY TOTORQMASTER, INTL. THE POSSESSOR AGREES TO MAINTAIN IT IN CONFIDENCE, NOT REPRODUCING OR REVEALING IT IN WHOLE OR IN PART.							SCALE NTS		SHEET 1 OF 1	