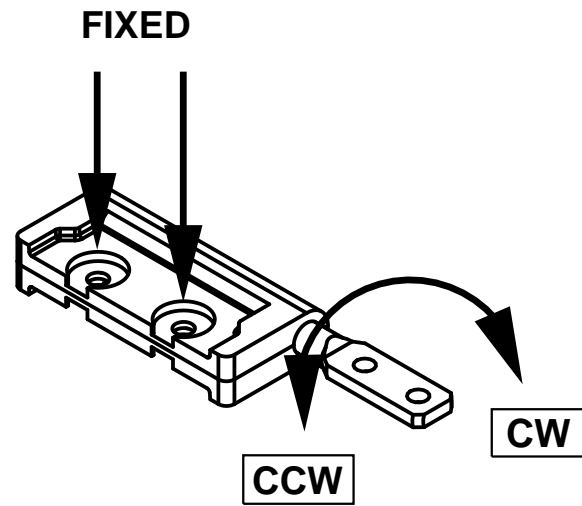
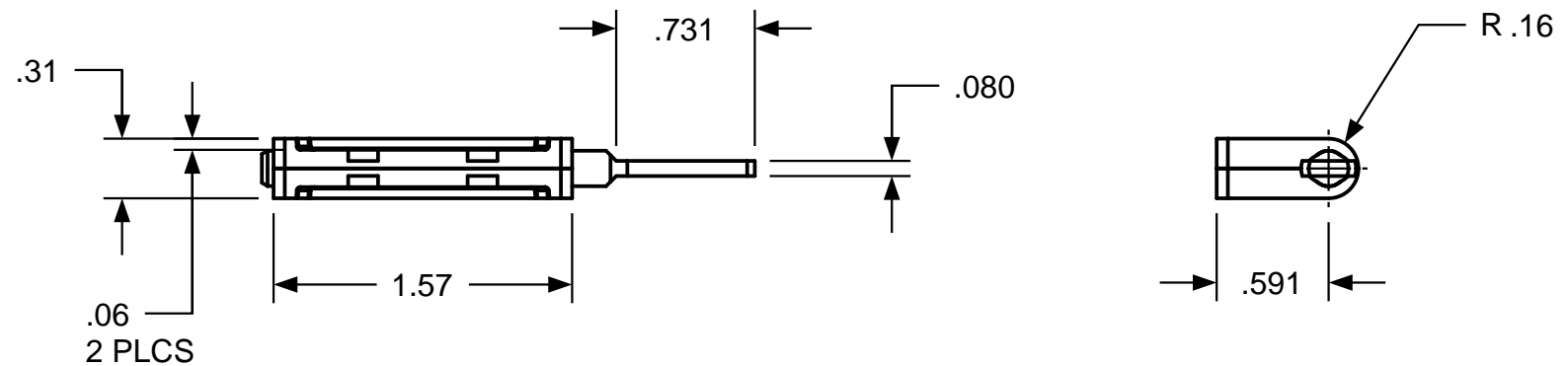
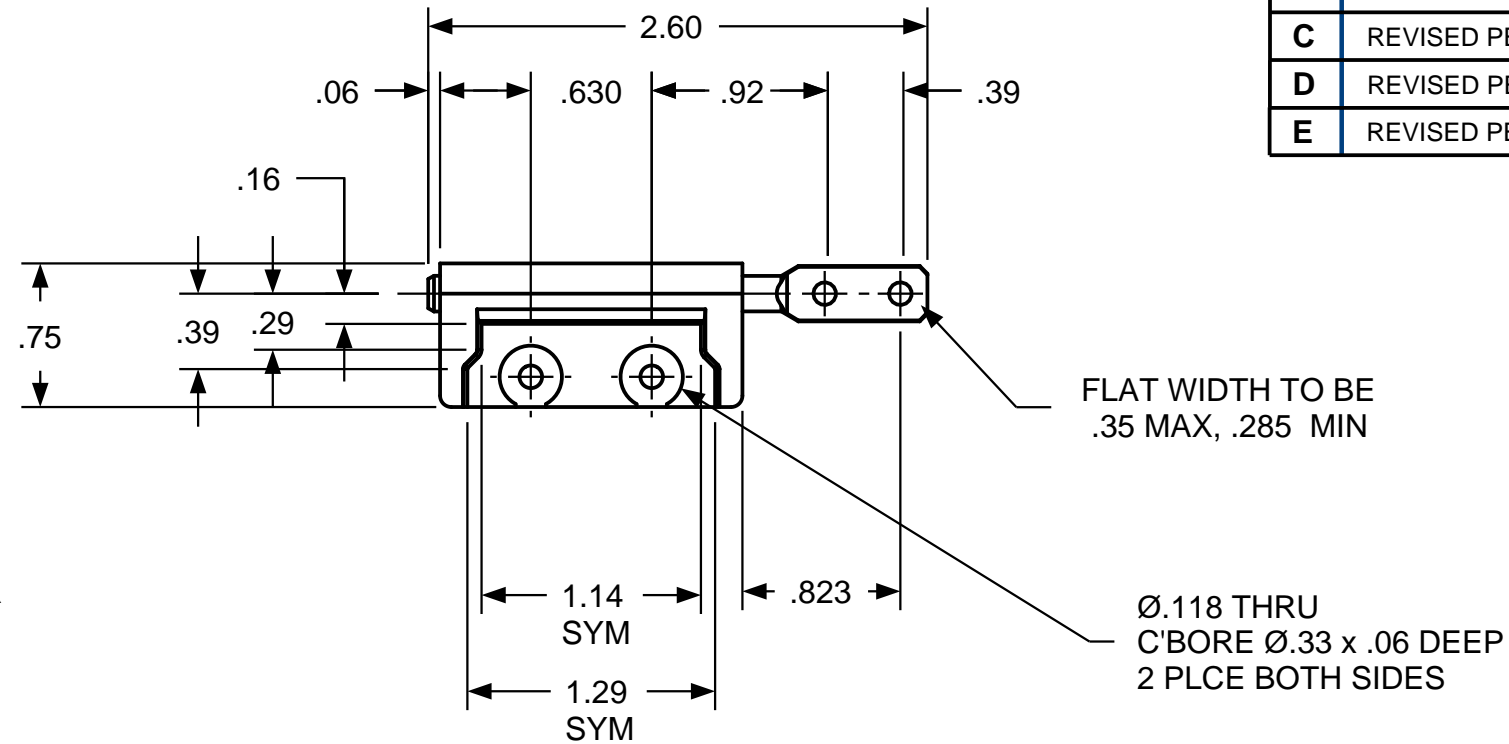


REVISION RECORD

SYM	DESCRIPTION	BY	DATE	APPD
C	REVISED PER ECN 02042.	RMF	6/7/02	DJC
D	REVISED PER ECN 04021.	RMF	2/6/04	DJC
E	REVISED PER ECN 09001	ETR	1/19/09	MW



ROTATION
AS SHOWN FOR
CALLOUT OF
TORQUE



TORQUE

GEOMETRY	CW TORQUE	CCW TORQUE
ZC 188 CF 101	5	5
ZC 188 CF 101	8	8
ZC 188 CF 101		
ZC 188 CF 101		
ZC 188 CF 101		

CUSTOM TORQUE
CONFIGURATIONS AVAILABLE.
FOR QUOTE:
www.torqmaster.com
1 - 888 - 41 - HINGE

USED ON	SOLID	REV	TOLERANCES		ENGLISH / METRIC		TorqMaster INTERNATIONAL		200 HARVARD AVE STAMFORD, CT USA		
STANDARD	101	E	ENGLISH	METRIC							
NEXT ASSY	N/A		.XX ±.015 IN	.X ±.3 MM	DRAWN BY	DATE	MATERIAL N/A				
QUANTITY			.XXX ±.005 IN	.XX ±.13 MM	RMF	8/16/00	TITLE HINGE INTERFACE				
PER ASSY, PCS	-		.XXXX ±.0020 IN	.XXX ±.05 MM	CHECKED BY	DATE	SIZE B		ZC 188 CF 101	REV E	
TOTAL, PCS	-		ANGLES ±0.5° SURFACE 63 μ		DJC	8/16/00	SCALE 1:1		SHEET 1 OF 1		
THIS INFORMATION IS PROPRIETARY TO TORQMASTER, INTL. THE POSSESSOR AGREES TO MAINTAIN IT IN CONFIDENCE, NOT REPRODUCING OR REVEALING IT IN WHOLE OR IN PART.											