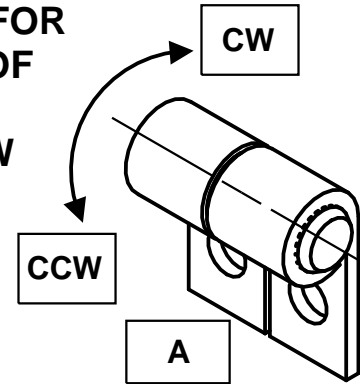
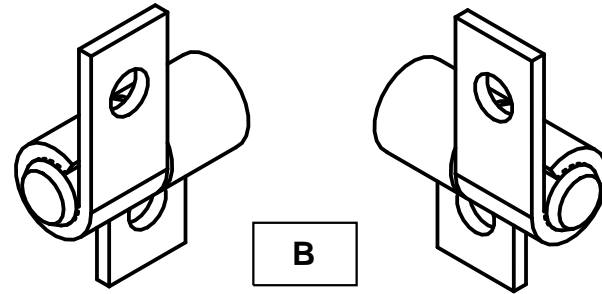


ROTATION
AS SHOWN FOR
CALLOUT OF
TORQUE
CW = CCW



ALTERNATE CONFIGURATION
AVAILABLE (A = AS DRWN.)



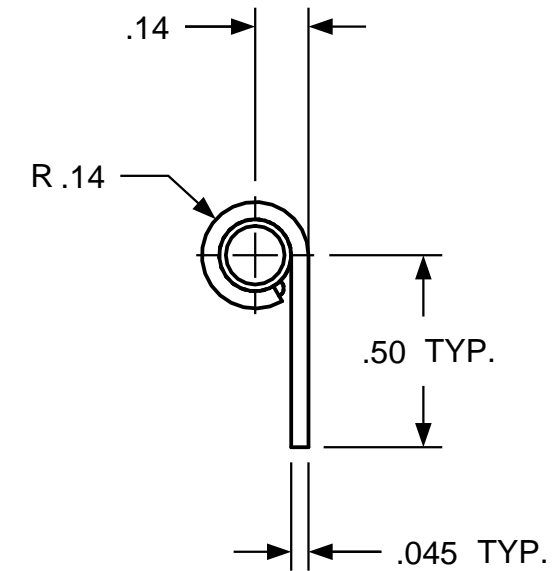
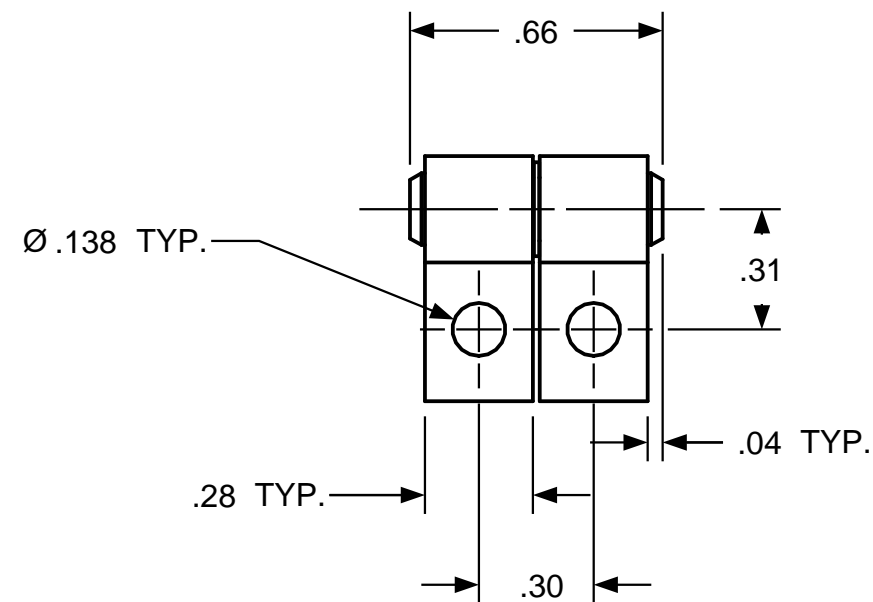
REVISION RECORD

SYM	DESCRIPTION	BY	DATE	APPD
A	RELEASED FOR MFG.	RA	6/4/18	RA
B	REMOVED CONFIG. [C] CALLOUT	RA	4/1/2019	RA

-TORQUE -

- 1 -	.5 - 1.5 lb. in
- 2 -	1.5 - 2.5 lb. in
- 3 -	2.5 - 3.5 lb. in
- 4 -	3.5 - 4.5 lb. in

CUSTOM TORQUE
CONFIGURATIONS
AVAILABLE.



USED ON	SOLID	REV	TOLERANCES		ENGLISH / METRIC		Torq MASTER INTERNATIONAL		200 HARVARD AVE STAMFORD, CT USA	
STANDARD	117	A	ENGLISH	METRIC						
NEXT ASSY	N/A		.XX ±.015 IN .XXX ±.005 IN .XXXX ±.0002 IN	.X ±.4 MM .XX ±.13 MM .XXX ±.05 MM	DRAWN BY	DATE	MATERIAL N/A			
QUANTITY					RA	6/4/18	TITLE HINGE, INTERFACE			
PER ASSY, PCS	-				CHECKED BY	DATE	SIZE B		REV B	
TOTAL, PCS	-				RA	6/4/18	SB 188 SB 117			
THIS INFORMATION IS PROPRIETARY TOTORQMASTER, INTL. THE POSSESSOR AGREES TO MAINTAIN IT IN CONFIDENCE, NOT REPRODUCING OR REVEALING IT IN WHOLE OR IN PART.							SCALE	NTS	SHEET	1 OF 1