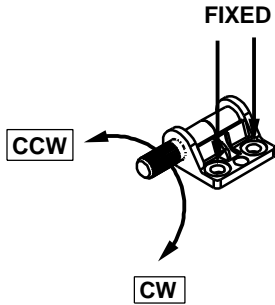
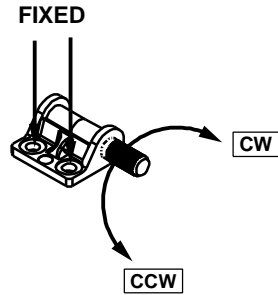


LEFT HAND



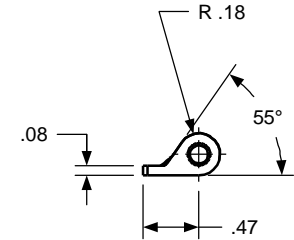
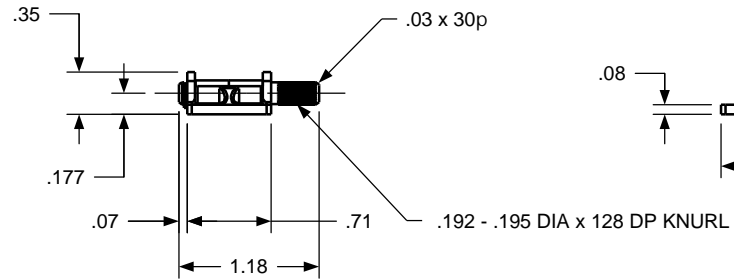
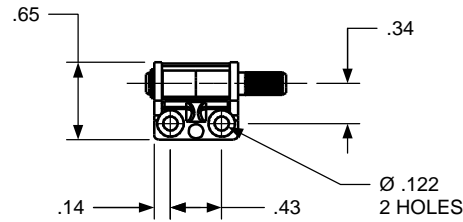
RIGHT HAND



ROTATION
AS SHOWN FOR
CALLOUT OF
TORQUE

REVISION RECORD


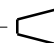
SYM	DESCRIPTION	BY	DATE	APPD
C	REDRAWN ON NEW FORMAT, NO CHANGES.	RMF	8/28/00	DJC
D	REVISED PER ECN 03076.	RMF	10/31/03	LH



TORQUE

GEOMETRY	CW TORQUE	CCW TORQUE	HAND
ZE-188-KN-101			
ZE-188-KN-101			
ZE-188-KN-101			
ZE-188-KN-101			

CUSTOM TORQUE CONFIGURATIONS AVAILABLE. FOR QUOTE:
www.torqmaster.com
1-888-41-HINGE

USED ON	SOLID	REV	TOLERANCES	DRAWN BY	DATE	ENGLISH		TorqMaster, Inc. Stamford, CT USA	
STANDARD	101	B	ENGLISH	RMF	8/18/00	MATERIAL		N/A	
NEXT ASSY	NONE		.XX ±.015 IN .XXX ±.005 IN	CHECKED BY	DATE	TITLE		HINGE INTERFACE	
QUANTITY				DJC	8/18/00				
PER ASSY, PCS	-					SIZE		ZE 188 KN 101	
TOTAL, PCS	-					SCALE		1:1	
THIS INFORMATION IS PROPRIETARY TO TORQMASTER, INTL. THE POSSESSOR AGREES TO MAINTAIN IT IN CONFIDENCE, NOT REPRODUCING OR REVEALING IT IN WHOLE OR IN PART.				 		SHEET		1 OF 1	
						REV		D	