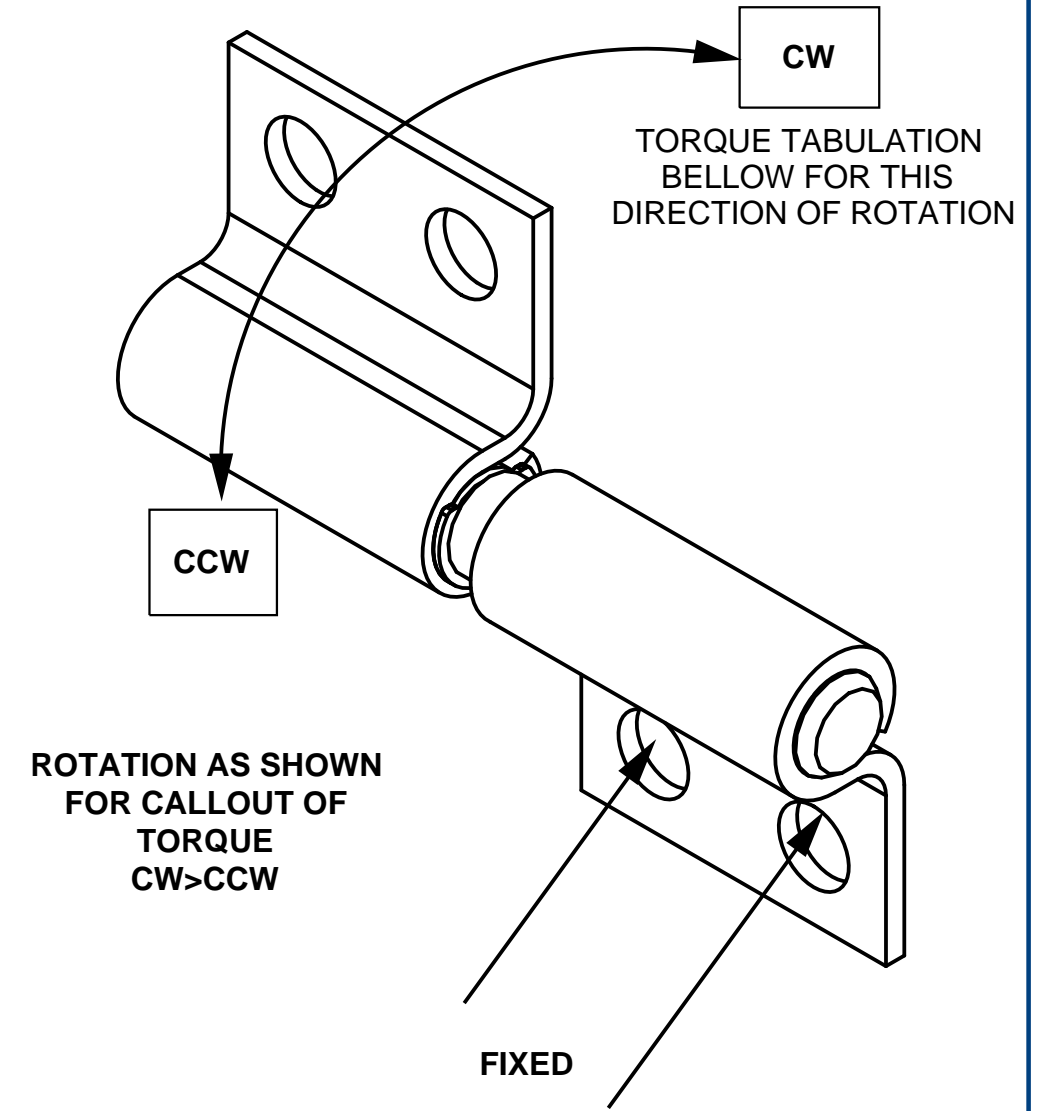
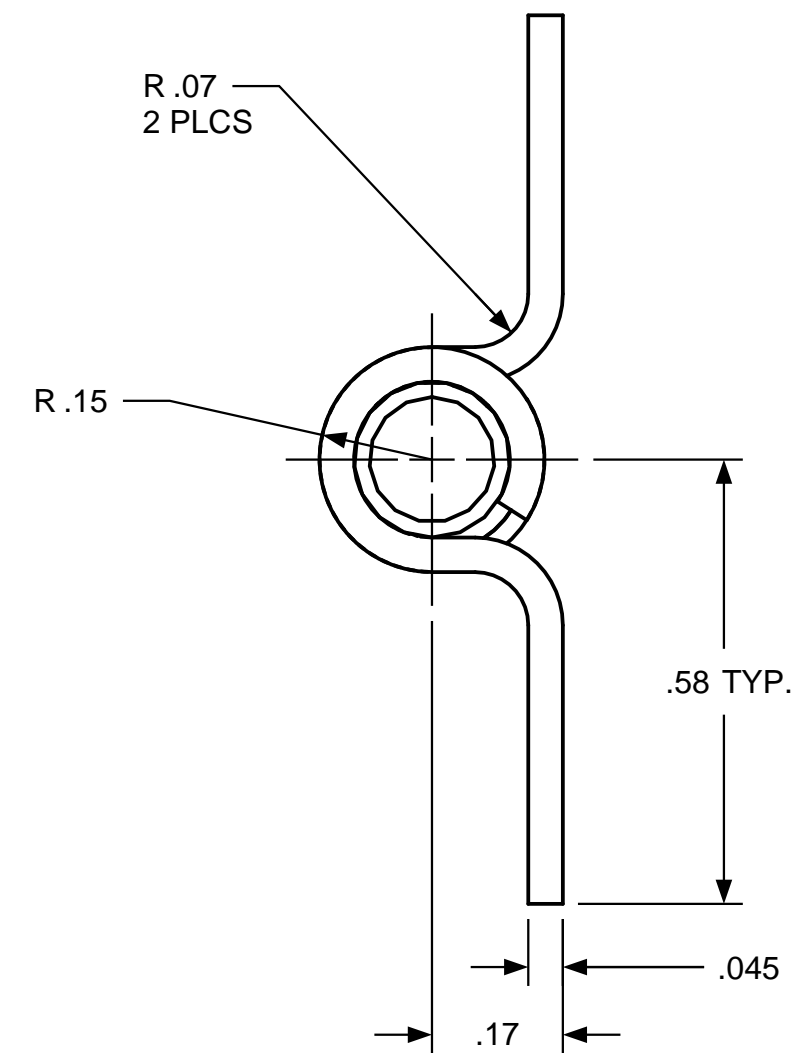
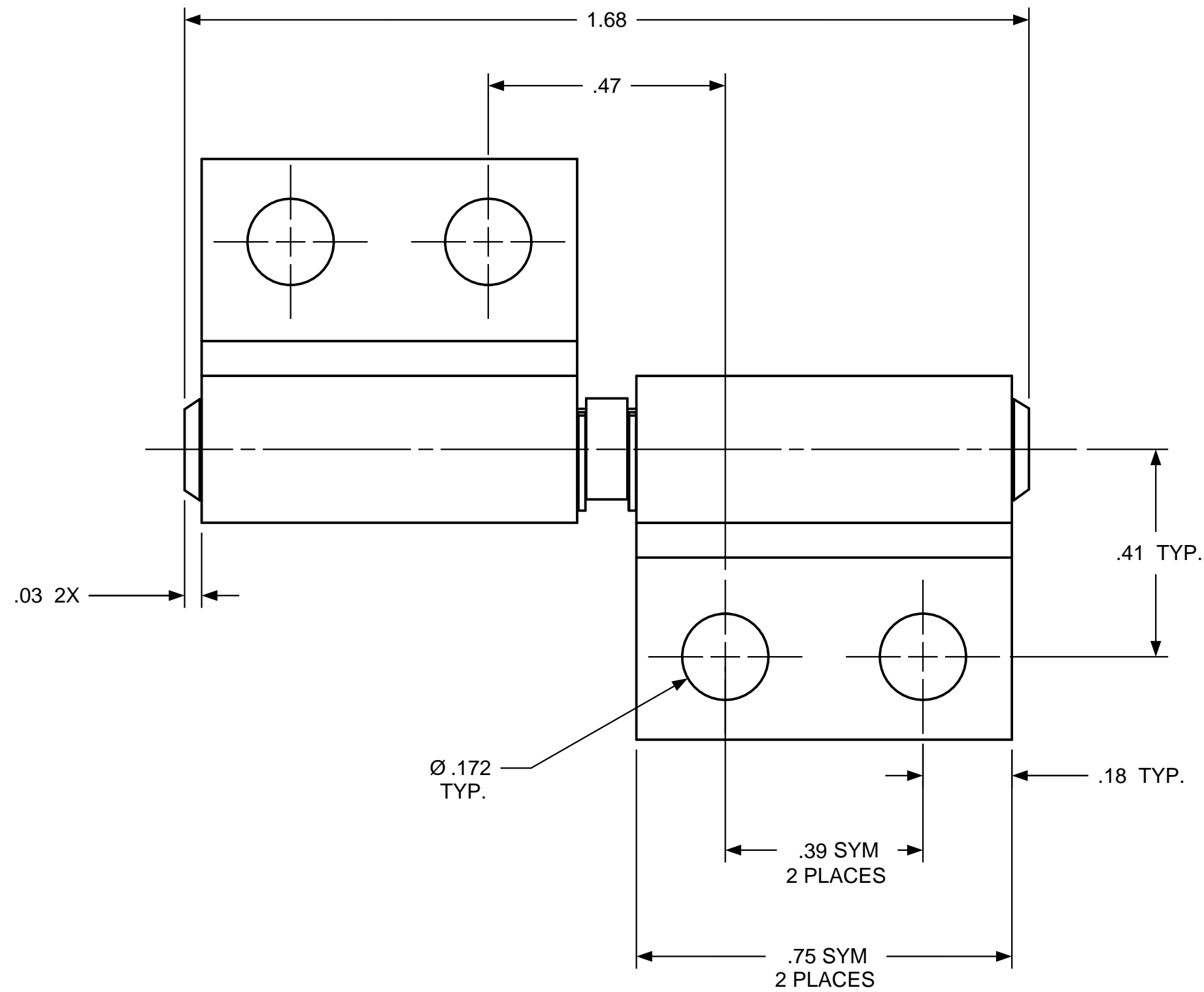


| REVISION RECORD |                   |    |         |      |
|-----------------|-------------------|----|---------|------|
| SYM             | DESCRIPTION       | BY | DATE    | APPD |
| A               | RELEASED FOR MFG. | RA | 11/2021 | RA   |

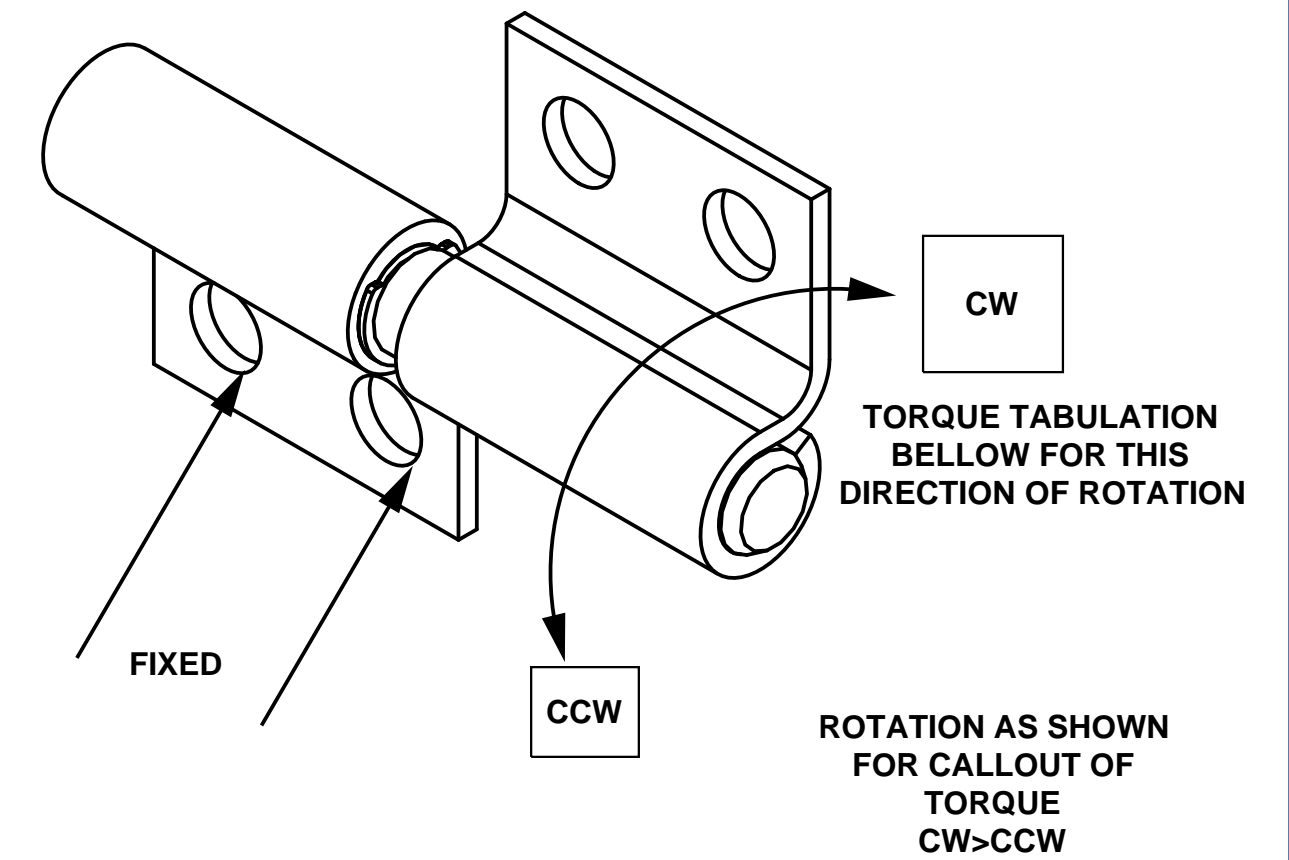
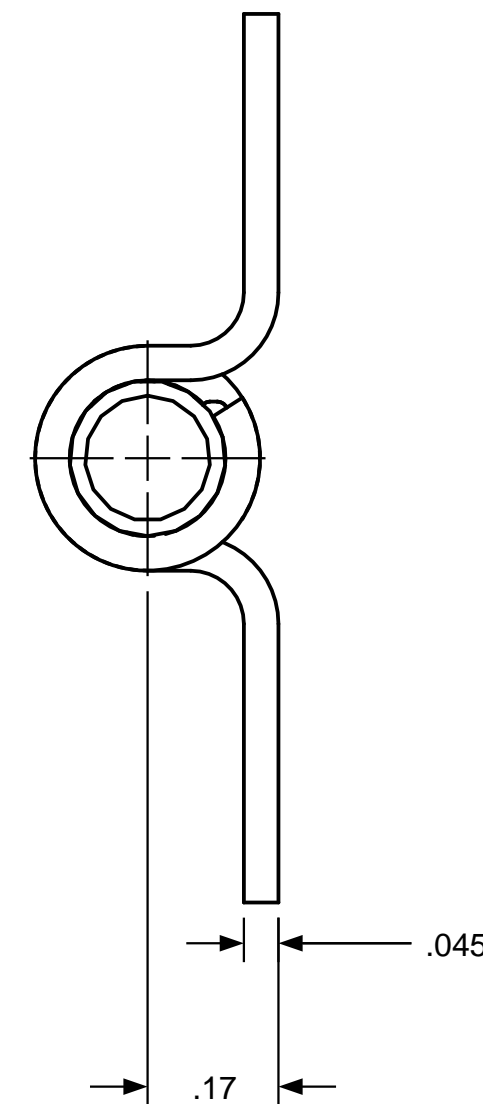
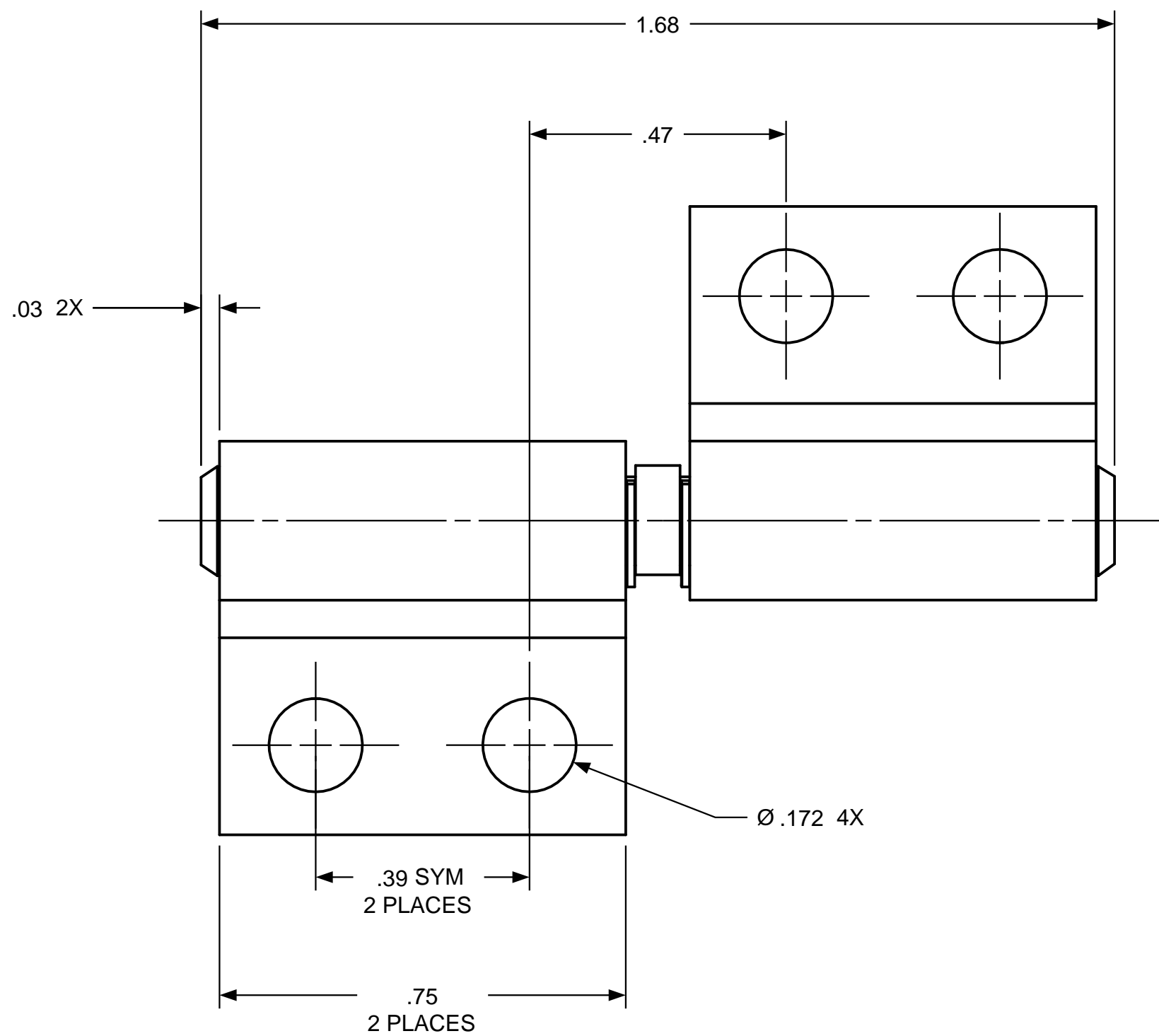


| TORQUE CALLOUT                         |
|--|
| <u>-1-</u><br>CW<br>3.0 - 6.0 lb. in   |
| <u>-2-</u><br>CW<br>6.0 - 9.0 lb. in   |
| <u>-3-</u><br>CW<br>9.0 - 13.0 lb. in  |
| <u>-4-</u><br>CW<br>13.0 - 17.0 lb. in |
| <u>-5-</u><br>CW<br>17.0 - 20.0 lb. in |

TORQUE CALLOUT TO FOLLOW MAIN PART #  
EXP: SB 200 SB 105 - 3 (TORQUE CW AS SHOWN 9.0-13.0 IN LB.)

| USED ON   | SOLID | REV | TOLERANCES                                       |  | ENGLISH / METRIC |         | TORQ MASTER INTERNATIONAL |                      | 200 HARVARD AVE<br>STAMFORD, CT USA |              |
|---|-------|-----|--|--|------------------|---------|---------------------------|----------------------|-------------------------------------|--------------|
| STANDARD  | 105   |     | ENGLISH  | METRIC                                   |                  |         |                           |                      |                                     |              |
| NEXT ASSY   | N/A   |     | .XX ±.015 IN<br>.XXX ±.005 IN<br>.XXXX ±.0002 IN | .X ±.3 MM<br>.XX ±.13 MM<br>.XXX ±.05 MM | DRAWN BY         | DATE    | MATERIAL                  | N/A                  |                                     |              |
| <b>QUANTITY</b>   |       |     |  |  | RA               | 11/2021 | TITLE                     |                      |                                     |              |
| PER ASSY, PCS   | -     |     | ANGLES ±0.5°<br>SURFACE 63 $\mu$                 |  | CHECKED BY       | DATE    | HINGE INTERFACE           |                      |                                     |              |
| TOTAL, PCS  | -     |     |  |  |                  |         | SIZE                      | <b>SB 200 SB 105</b> |                                     | REV          |
| THIS INFORMATION IS PROPRIETARY TOTORQMASTER, INTL.<br>THE POSSESSOR AGREES TO MAINTAIN IT IN CONFIDENCE,<br>NOT REPRODUCING OR REVEALING IT IN WHOLE OR IN PART. |       |     |  |  |                  |         | C                         |                      |                                     | A            |
|   |       |     |  |  |                  |         | SCALE                     | 1:1                  |                                     | SHEET 1 OF 1 |

| REVISION RECORD |                   |    |         |      |
|-----------------|-------------------|----|---------|------|
| SYM             | DESCRIPTION       | BY | DATE    | APPD |
| A               | RELEASED FOR MFG. | VC | 7/15/13 | RA   |



| TORQUE CALLOUT                         |
|--|
| <u>-1-</u><br>CW<br>3.0 - 6.0 lb. in   |
| <u>-2-</u><br>CW<br>6.0 - 9.0 lb. in   |
| <u>-3-</u><br>CW<br>9.0 - 13.0 lb. in  |
| <u>-4-</u><br>CW<br>13.0 - 17.0 lb. in |
| <u>-5-</u><br>CW<br>17.0 - 20.0 lb. in |

TORQUE CALLOUT TO FOLLOW MAIN PART #  
EXP: SB 200 SB 102 - 3 (TORQUE CW AS SHOWN 9.0-13.0 IN LB.)

| USED ON   | SOLID | REV | TOLERANCES                                       |  | ENGLISH / METRIC |         | TORQ MASTER INTERNATIONAL |                      | 200 HARVARD AVE<br>STAMFORD, CT USA |              |
|---|-------|-----|--|--|------------------|---------|---------------------------|----------------------|-------------------------------------|--------------|
| STANDARD  | 106   |     | ENGLISH  | METRIC                                   | DRAWN BY         | DATE    | MATERIAL                  | N/A                  |                                     |              |
| NEXT ASSY   | N/A   |     | .XX ±.015 IN<br>.XXX ±.005 IN<br>.XXXX ±.0002 IN | .X ±.3 MM<br>.XX ±.13 MM<br>.XXX ±.05 MM | RA               | 11/2021 | TITLE                     | HINGE INTERFACE      |                                     |              |
| <b>QUANTITY</b>   |       |     | ANGLES ±0.5°<br>SURFACE 63 $\mu$                 |  | CHECKED BY       | DATE    | SIZE                      | <b>SB 200 SB 106</b> |                                     | REV          |
| PER ASSY, PCS   | -     |     |  |  |                  |         | C                         |                      |                                     | A            |
| TOTAL, PCS  | -     |     |  |  |                  |         | SCALE                     | 1:1                  |                                     | SHEET 1 OF 1 |
| THIS INFORMATION IS PROPRIETARY TOTORQMASTER, INTL. THE POSSESSOR AGREES TO MAINTAIN IT IN CONFIDENCE, NOT REPRODUCING OR REVEALING IT IN WHOLE OR IN PART. |       |     |  |  |                  |         |                           |                      |                                     |              |