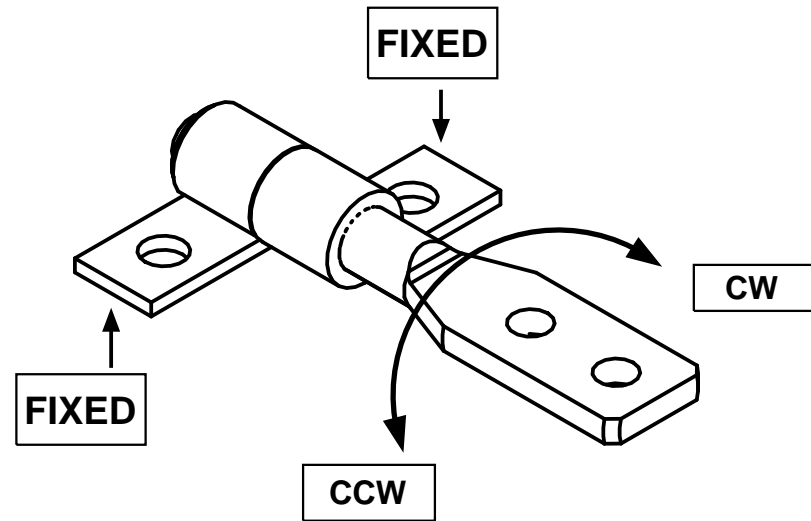
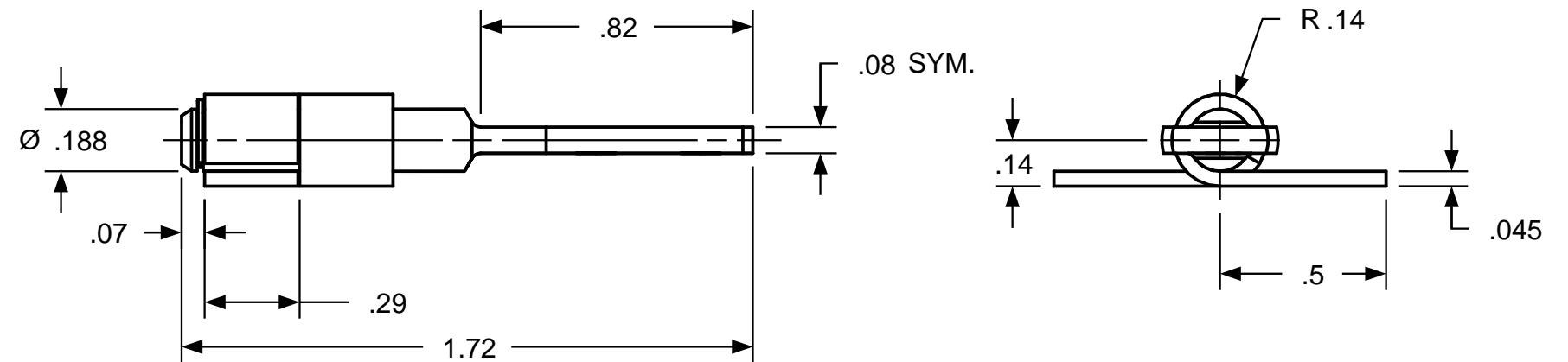
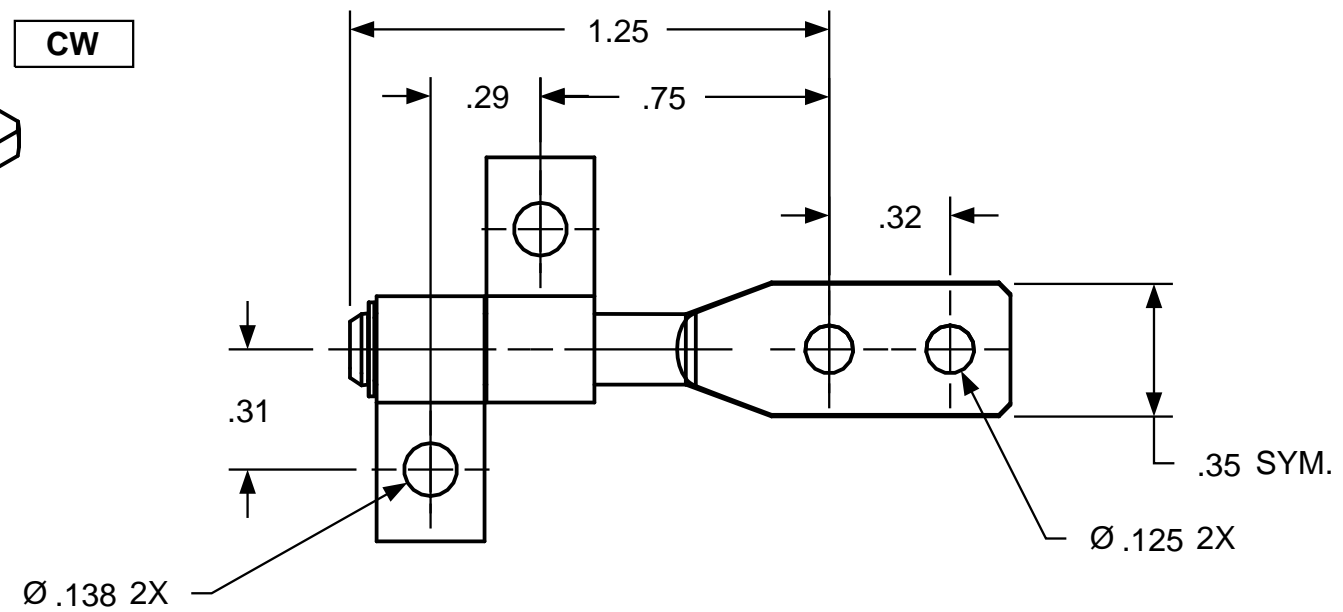


REVISION RECORD

SYM	DESCRIPTION	BY	DATE	APPD
A	RELEASED FOR MFG.	RA	1/14/20	RA



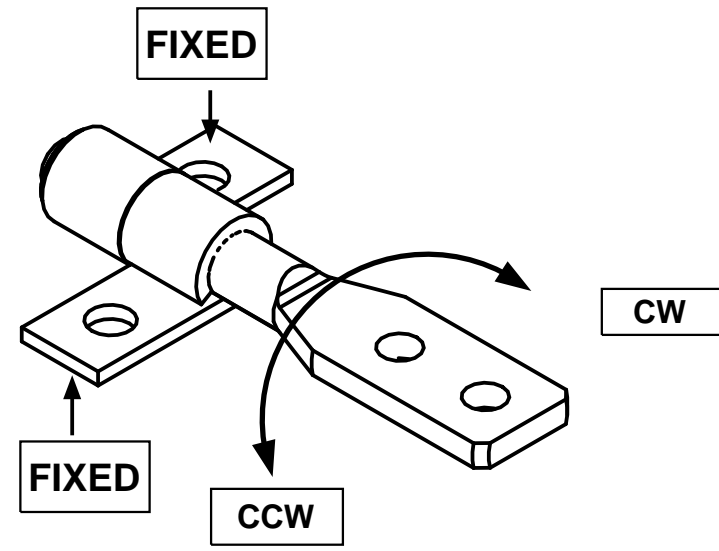
TORQUE  
BALANCED / SYMETRIC  
MAX TORQUE 10  
INCH POUNDS



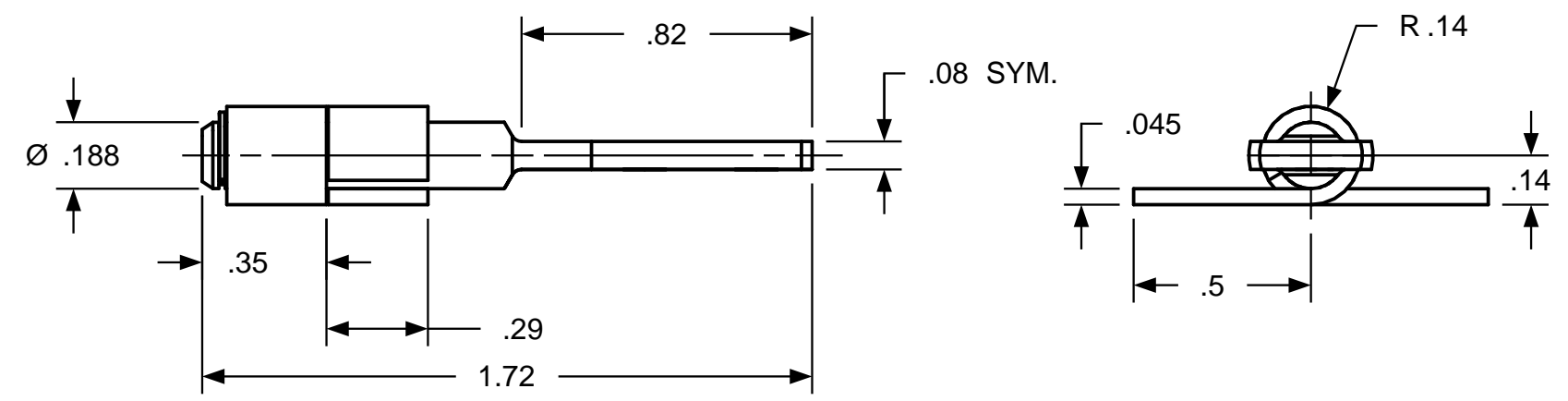
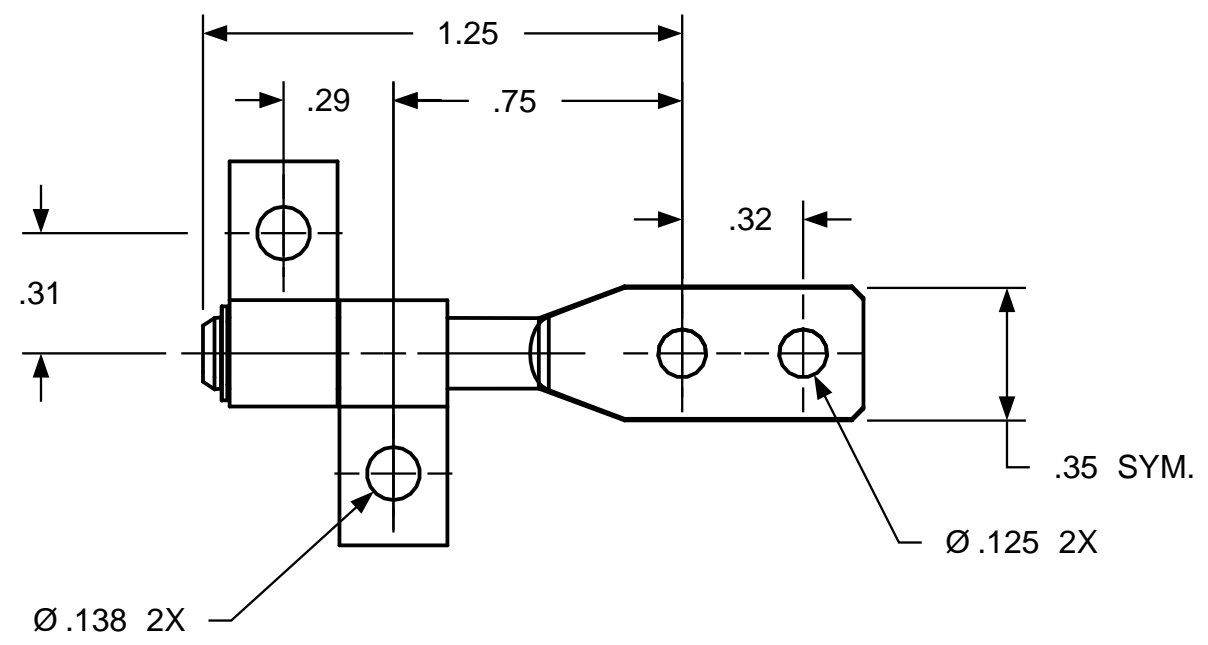
USED ON	SOLID	REV	TOLERANCES		ENGLISH / METRIC		TORQ MASTER INTERNATIONAL		200 HARVARD AVE STAMFORD, CT USA		
STD. SB188CF	103	A	ENGLISH	METRIC							
NEXT ASSY	N/A		.XX ±.015 IN	.X ±.4 MM	DRAWN BY	DATE	MATERIAL N/A				
<b>QUANTITY</b>			.XXX ±.005 IN	.XX ±.13 MM	RA	1/14/20	TITLE HINGE INTERFACE				
PER ASSY, PCS			.XXXX ±.0002 IN	.XXX ±.05 MM	CHECKED BY	DATE	SIZE B		REV A		
TOTAL, PCS							SCALE NTS		SHEET 1 OF 1		
THIS INFORMATION IS PROPRIETARY TOTORQMASTER, INTL. THE POSSESSOR AGREES TO MAINTAIN IT IN CONFIDENCE, NOT REPRODUCING OR REVEALING IT IN WHOLE OR IN PART.											

REVISION RECORD

SYM	DESCRIPTION	BY	DATE	APPD
A	RELEASED FOR MFG.	RA	1/14/20	RA



TORQUE  
BALANCED / SYMETRIC  
MAX TORQUE 10  
INCH POUNDS



USED ON	SOLID	REV	TOLERANCES		ENGLISH / METRIC		TORQ MASTER INTERNATIONAL		200 HARVARD AVE STAMFORD, CT USA	
STD. SB188CF	104	A	ENGLISH	METRIC						
NEXT ASSY	N/A		.XX ±.015 IN	.X ±.4 MM	DRAWN BY	DATE	MATERIAL N/A			
<b>QUANTITY</b>			.XXX ±.005 IN	.XX ±.13 MM	RA	1/14/20	TITLE HINGE INTERFACE			
PER ASSY, PCS			.XXXX ±.0002 IN	.XXX ±.05 MM	CHECKED BY	DATE	SIZE B		REV A	
TOTAL, PCS							SCALE NTS		SHEET 1 OF 1	
THIS INFORMATION IS PROPRIETARY TOTORQMASTER, INTL. THE POSSESSOR AGREES TO MAINTAIN IT IN CONFIDENCE, NOT REPRODUCING OR REVEALING IT IN WHOLE OR IN PART.										