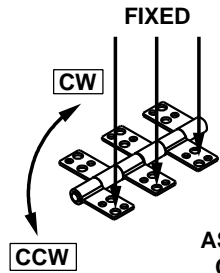
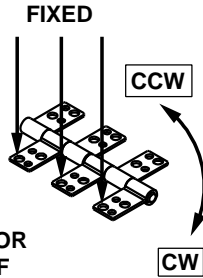


LEFT HINGE



RIGHT HINGE



ROTATION
AS SHOWN FOR
CALLOUT OF
TORQUE
CW < CCW

TORQUE

LOW

CCW
7.5 - 13.5 lb. in

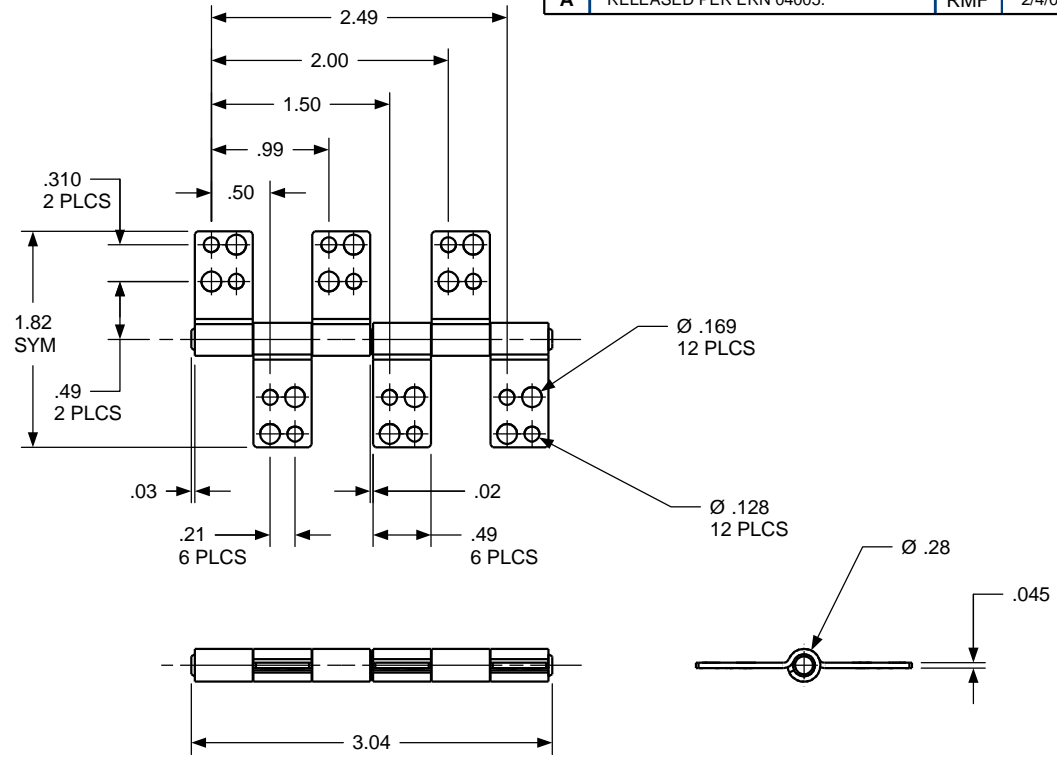
MEDIUM

CCW
13.5 - 18.5 lb. in

HIGH

CCW
18.5 - 22.5 lb. in

REVISION RECORD				
SYM	DESCRIPTION	BY	DATE	APPD
A	RELEASED PER ERN 04005.	RMF	2/4/04	DJC



USED ON	SOLID	REV	TOLERANCES		ENGLISH / METRIC		TOROMASTER INTERNATIONAL		200 HARVARD AVE STAMFORD, CT USA	
STANDARD	326	0.0	ENGLISH	METRIC						
NEXT ASSY	N/A		.XX ±.015 IN .XXX ±.005 IN .XXX ±.0020 IN	.X o.3 MM .XX o.13 MM .XXX o.05 MM	DRAWN BY	DATE	MATERIAL N/A			
QUANTITY			ANGLES ±0.5° SURFACE 63 μ		DJC	11/12/03	TITLE HINGE INTERFACE			
PER ASSY, PCS	-				CHECKED BY	DATE	SIZE B		REV A	
TOTAL, PCS	-				DJC	11/12/03	SB 188 SB 326			
THIS INFORMATION IS PROPRIETARY TO TOROMASTER, INTL. THE POSSESSOR AGREES TO MAINTAIN IT IN CONFIDENCE, NOT REPRODUCING OR REVEALING IT IN WHOLE OR IN PART.					SCALE 1:1		SHEET 1 OF 1			